

\$2 ~ Michelago Magpie 47~ ©

31 March 2026

from your Michelago Region Community Association

All issues on www.michelagoregion.org.au

Print copies: \$2 supports heritage railway station upkeep



To get emailed Magpie free: name & address to newsletter@michelagoregion.org.au

In this Magpie: Heritage & Market Day 1 & 2. Anzac Day 2. Seeking soldier photos 2. Fire Brigades 3, 4, 13. Micalago Rd 5, 6, 16. Business awards for locals 7. Senior Lunch Group 9. Choir 9. Happy Hour & Chat 10. SMRC satisfaction survey 11. Councillor censured 11. Hall 12. Servo news 12. Bush Bubs 13. Weeds info 15. Easter Egg Hunt 15. Garden Group 16. Cooma Show cake winners 17. Paint & Sip event 17. MRCA & Magpie info 19. What's On? 20.

Services: Alpaca Poo, Plumber, Painter, Mechanic, Craft, Real Estate, JP, Yless4U, Seniors Home Support



Michelago Heritage Open Day & Market – Sunday 3 May

As part of the Australian Heritage Festival, the Michelago Region Community Association is hosting a market and open day at the Michelago Railway Station. Kerry Rooney

HERITAGE MARKET

3 MAY
10 AM – 2 PM

MICHELAGO RAILWAY STATION OPEN DAY
RYRIE ST

We are excited to have Yless4U as the major sponsor for the event. Yless4U is a local internet service provider (see p.8 for details).

We expect 20 stallholders who will be selling handcrafted goods, art and collectibles, plants and produce, all in time for Mothers Day. Michelago's Rural Fire Brigade BBQ, School P&C cake stall and Johnoz coffee van will provide refreshments.



Join us for Tales and Tours with sessions planned at 10.30 am and 12.00 pm. Tales will be told about the arrival of rail in 1887 and how it changed the small village of Micalago forever. Visitors will find out how the impressive little station was saved from demolition and will see first-hand the ongoing efforts to conserve a precious piece of Michelago's heritage.

R: Telegraph machine donated by the Canberra Rail Museum in 2025. See Magpie 38 on www.michelagoregion.org.au



The Michelago Community Choir will provide entertainment and Kiandra Clydesdales is planning to offer horse-and-cart rides.

Entry: gold coin donation.

We thank those who have volunteered as first aid officers for the event.

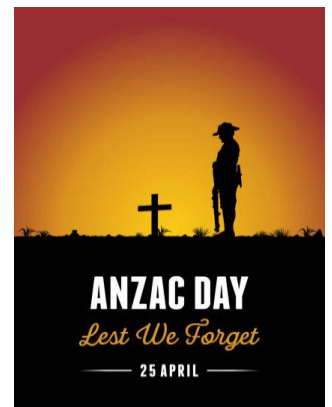
Volunteers are also needed to assist with setup on 3 May. If you can help, even for an hour, please contact Kerry: kerryaroonney@gmail.com



ANZAC Day, Saturday 25 April

The Michelago Anzac Day service will be held at 10 am on Monday 25 April at the Michelago Railway Station.

If you could bring a plate to share for morning tea after the service, it would be very much appreciated. You are welcome to bring a wreath / bunch of flowers to lay at the cenotaph during the service.



Seeking WWI soldier photos

Cooma author Paul McGufficke is producing a book about Monaro servicemen. It will contain photographs of the graves of those killed overseas. He is now searching for photos of the servicemen themselves. Head photos are fine. He texted the MRCA that he is looking for these:

1. Arthur George McKenzie, killed 17.4.1918. Buried in Outtersteen Cemetery, Bauilleul, France. His aunt, J Russ, was from Micalago Station.
2. Walter Smith, killed 20.5.1917. Buried Boulogne Eastern Cemetery, Pas de Calais, France. Son of Henry and Annorah Smith.
3. John Ryan, killed 11.10.1917. Buried in the Huts Cemetery, Dickebusch, Belgium. Son of Elizabeth and Martin Ryan, June. Educated and living in Michelago when he enlisted.

We don't have John Ryan on the Michelago Cenotaph's Roll of Honour, but we do have an Edward Ryan. Apparently, first names were sometimes interchanged with an individual's second name, so one could speculate whether this was the same soldier.

Any help would be greatly appreciated. Please contact Paul McGufficke on 0476 112 446 or paul.mcgufficke@outlook.com



Colinton and Michelago Brigades assist in SA

Peter Butler



Two members of Michelago Brigade, Senior Deputy Captain Peter Butler and Senior Fire Fighter Rob Smith, plus Werner Lausberg of Colinton Brigade, were recently deployed to South Australia as part of a NSW RFS 60-person strike team contingent to assist at the Deep Creek Fire on the Fleurieu Peninsula.

These three local members combined with two Forestry Commission firefighters. They



formed a heavy tanker crew and spent a week in SA operating CFS tankers and working with other NSW RFS teams, NSW Forestry Commission Firefighters, Victorian Country Fire Authority strike teams (also deployed), SA National Parks and SA Country Fire Service teams to assist in bringing the fire under control.



Above left: Rob Smith, Werner Lausberg and Peter Butler (RFS) with Hayley Brightmore & Melissa Gibbons (FC South Coast). Photos supplied. Map credit: Wikipedia.

This fire engulfed over 4,500 hectares of national park and a number of residential structures were lost. Our members gained invaluable experience in working with other interstate agencies on such a large-scale deployment and were happy that they could contribute their efforts on behalf of the NSW RFS.



RFS teams practise airport emergency response

Peter Butler



On Wednesday 4 March, our Michelago team members participated in our Cat1 Tanker in a large-scale multi-agency emergency services exercise at Cooma Airport.

Agencies included: NSW RFS, Ambulance, SES, Fire & Rescue, Police, RMS and observers from Snowy 2.0 and other stakeholders.

Photos: Peter Butler



The purpose of the exercise was to test the airport's emergency response plans, as mandated bi-yearly by the Civil Aviation Safety Authority (CASA). With the operations of Snowy 2.0, the operations of the airport have grown from one to two small aircraft per day to now sometimes five to six 80-seater aircraft per day when the FIFO workforce people are on shift rotations.

L: Michelago's Cat1 Tanker and the Cooma SES Rescue Truck.



A large AWD bus from Snowy 2.0 was used for the exercise to simulate an aircraft that crashed on the runway. The great benefit of this substitution was that the same response and rescue principles could be applied to a bus/coach crash on the highway.

L: Michelago's Aldo, William and Gregg.

Michelago, Cooma and Berridale RFS units provided fire suppression for the initial crash site and then continued with fire protection while Fire & Rescue, SES and Ambulance attended to casualties and extracted trapped passengers. The exercise also tested the inter-operability of all responding agencies.

Whether it be for an aircraft or bus/coach incident, the exercise was a great success with many valuable lessons learnt on the day.

Michelago Brigade members attending: Snr Deputy Peter Butler, Crew Leader Rob Smith, Firefighters William Butler, Gregg McFaull and Aldo Giucci.



Autumn Tinderry Hazard Reduction Planning – Michelago RFS

Information supplied by Abby MacPherson, Michelago Captain

Sunday, 16 March, Michelago Fire shed. 9.30–11.

The National Parks and Wildlife Service community session was held at Michelago Fire Station on Sunday 16 March regarding proposed Autumn hazard reduction in the Tinderry area.

Hazard reduction will be at Cassidys Creek. It's planned for April (weather permitting).

The primary focus is on asset protection by:

- Reducing the risk of fire impacting from the west
- Preventing fire running through the park toward housing, infrastructure and heritage areas.

Conditions are currently being monitored to identify a suitable Autumn burn-window.



It's expected the hazard reduction will run over multiple days with a cool burn objective.

NSW RFS will help with ignition and mop-up operations. The burn area will be approximately 670 hectares.

Environmental and community considerations include:

- Protection of koala habitat
- Threatened flora
- Heritage areas
- Built assets
- Managing smoke impacts for the Burra and Michelago community.



**Micalago Road: follow-up to resident's letter in *Magpie 46*
(21 March update p.15)**

The following two letters, published with permission, are dated 25 February.

Dear Suzanne



It is unfortunate that you have had a recent run of issues with your vehicle. Council has finite resources and has a vast unsealed road network, all with commuters wishing to see 'their' road given more investment. Council unfortunately cannot service all roads to the level that commuters would like, as this would be financially unsustainable and beyond the ratepayers' capacity to pay.

Council regularly inspects the unsealed road network assessing risk and degradation, and we adjust our maintenance programs accordingly to ensure our roads are safe.

Council inspected Micalago Road two weeks ago, and as a result, are looking at establishing grading crews within the next two weeks, subject to weather and other emergent issues.

Segment 10 – Monaro Highway to Ryrie Street

This section is scheduled for renewal. Council will be re-sheeting with new imported gravel, with a higher plasticity index (PI) which will mitigate the propensity for corrugating.

Segment 20 – Ryrie Street to Horseshoe Lane

This section is generating the most concern. The existing material is raveling and is highly susceptible to heavier corrugations. Council is proposing stabilisation of the existing pavement. Council will increase the volume in Segment 20 by incorporating additional fines and raise the PI, then incorporate stabiliser. An added benefit to this process is improved dust suppression, which will help address community concerns related to heavy haulage movements.

Cheers

Tony Lickiss

Chief Of Infrastructure and Projects

Dear Tony

Thank you for your reply.

Work on the road up to Horseshoe Lane needs to extend around the corner, past 225 where more rocks are working their way up to the surface where I wrecked my tyre.

I heard recently a motorbike driven by a Micalago Road resident nearly came to grief and another resident's son wrecked his tyre hitting one of the potholes on the road where the warning signs are close to the overhead train bridge. It's an accident waiting to happen.

I guess you don't have a plausible answer to my comment about money raised from subdivisions getting spent elsewhere.

Regards
Suzanne Stevens

Tony's reply, 26 February

Hi Suzanne

'I guess you don't have a plausible answer to my comment about money raised from subdivisions getting spent elsewhere.'

No funding was moved from Karinya Plains Road Subdivision and given to Smiths Road. This is false. Smiths Road was funded from a grant provided by the then local State member Mr John Barilaro.

More generally, developer contributions are used in the wider local area, not specifically on the road where the money was raised. This is governed by the Michelago contributions plan.

<https://www.snowymonaro.nsw.gov.au/Building-and-Planning/Development/Developer-Contributions/Local-Infrastructure-Contributions>

This money cannot be used outside of this plan and is audited annually.

Tony Lickiss
Chief of Infrastructure and Projects



Phone 1300 345 345

PO Box 714
COOMA NSW 2630

[Micalago Rd updates 21 and 28 March: see p.16]

Local awards for Michelago Licensed Café & Store and for Alpine Aviation

The café was a finalist in four categories of the Snowy Monaro Business Awards: Excellence in Small Business, Tourism and Catering, and Visitor Experience, and Veronica Warner was a finalist in the category Outstanding Employee – quite an achievement! Martin Hughes' Finalist Award recognised his soaringly successful Alpine Aviation. The awards are sponsored by SnowyHydro.



There was excited anticipation before the announcement of the winners at the Oaks Restaurant, Lake Crackenback Resort, on 27 March. The event was organised by the Jindabyne Chamber of Commerce. *Images: B Hayes, Facebook and supplied.*

The Michelago Licensed Café and Store won Excellence in Small Business. Congratulations to Belinda Hayes! More awards, this time at the Cooma Show: see p.17.



1. Belinda with her award.
2. Belinda & Veronica.
3. Veronica with her award.
4. Veronica at work.



Alpine Aviation was a finalist in the category Micro Business (i.e. one with less than 5 employees). *L: Alpine Aviation's logo.*

R: Sally Hughes and Belinda Hayes with Martin Hughes, Chief Flying Instructor of Alpine Aviation.





1 MONTH'S FREE INTERNET!!!

Call us at 02 6230 3699 to get connected
with the Promo Code: MAGPIE

\$45 /mth

25/5Mbps

\$79 /mth

50/20Mbps

\$99 /mth

100/20Mbps

\$119 /mth

200/50Mbps



Unlimited data



Local Customer support



No installation costs

Sign up at yless4u.com.au
or call **02 6230 3699**

sales@yless4u.com.au

*We do our best to deliver speeds as advertised. Speeds may vary due to a number of factors including equipment, distance from the router, the number of connected devices, and interference. Dependent on your address and service availability.



Senior Lunch Group at the Cooma H Café

Photos: Kerry & Julie

First Monday of the month at 12.30 is greet and gossip / eat and enjoy / socialise and sip time for seniors and not-so-seniors. All welcome. Contact: Janet 0414 785 865.

Monday 2 March. It was yet another Tasting Trip for the SLG, feasibly to be renamed as the GG – Galloping Gourmets. Or, for a few, the Limping Lunchers. Three had pulled out because of the heavy rain and other commitments but look forward to a Cooma H Café visit another time.



R : 1. The lunchers. 2. Julie and daughter Tracy..

Lunch in the Big Smoke

Kerry Rooney

The Senior Lunch Group left their haystacks behind in a cloud of Burra Road dust and ventured down the Monaro Highway to lunch in the big smoke of Cooma. Our small convoy included the dinkum Aussie V8 ute, which incidentally has never seen a dirt road, housed as it is beside the Monaro Highway and allowed out on rare occasions only.



You don't need Google maps to find most venues in the township of Cooma. In fact, Cooma H Hardware's attractive yellow shopfront stands out like a beacon on Polo Flat Rd.

The Hardware staff are friendly and the resident yellow Labrador greets everyone as they browse the bright, spacious shop. And located in the hardware premises is the popular Cooma H Café, the destination of the intrepid lunch group.

Mother and daughter team Julie and Tracy Huggett own the H Café. They serve up traditional café fare such as breakfast, burgers and schnitzel and make a good cup of coffee. Their pièce de résistance, however, is the fish that comes from Eden. Two varieties were on offer: blue grenadier and flathead.

Customers can choose to eat in or sit outside under cover, next to the pleasant vista of the Hardware store's garden section. The service is efficient, but old-fashioned country style with time for a bit of banter. We'll be back for more.

Cooma H Café 58-62 Polo Flat Rd. Open 7 am to 3 pm Mon–Fri.



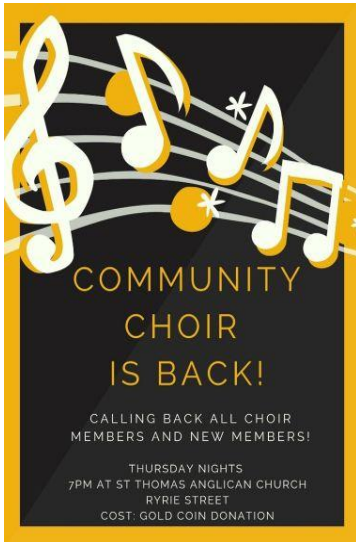
Call Pete's [Top Spec](#) for top car and truck care. Pete's the best.

He has two loan cars for your convenience while your vehicle is in his care. You need to book them ahead.



Michelago Community Choir

Dee McFaull



The Michelago Community Choir gathers on Thursdays at 7pm at the St Thomas Church, next to the Police Station, Ryrie St.

The choir is purely for getting to know other folk from Bredbo, Burra, Tinderry Mountains and Michelago region.

We sing for fun together, laugh together and generally just have a wonderful hour of joyful community.

No experience is needed and all resources are supplied. All we ask in return is your enthusiasm and a gold coin donation. Love to see all members and new faces.



Selling or buying?

RURAL EXPERIENCE COUNTS

With over 12 years experience selling homes and properties in and around Michelago, Chris is a trusted agent who can make a big difference in your real estate journey.

Give Chris a call for an obligation-free chat about how he can assist you with your property needs.



CHRIS CHURCHILL

0417 080 460

cchurchill@blackshaw.com.au

Unit 8 37 Kesteven Street, Flory

blackshaw.com.au

SCAN ME

FILL OUT THE FORM AND I WILL BE IN TOUCH



Call Chris Churchill. He's straightforward and informative.

Chris has extensive experience with rural properties.

Call him for an obligation-free, helpful chat: 0417 080 460.

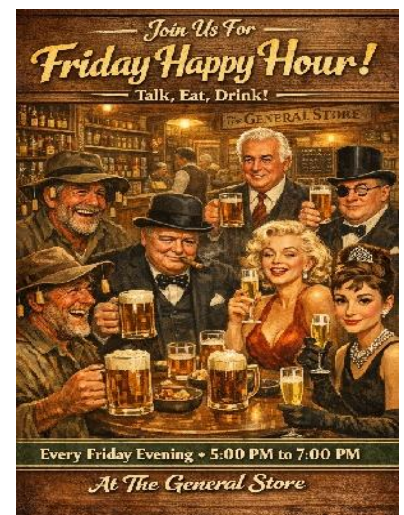
cchurchill@blackshaw.com.au



Talk, eat, drink – Friday nights at the Michelago Licensed Café and Store

[Magpie 46 published Peter Bobroff's idea for active conversation about current affairs at the Michelago Licensed Café at 6pm on the second Thursday of the month. However, this arrangement has changed.]

Stay a little longer at the Michelago General Store on Friday evenings. Enjoy the relaxed atmosphere, share a bite, and catch up with neighbours over a drink. Happy Hour runs from 5 to 7pm, and there is always something happening in the world – locally, nationally, and beyond – that is worth talking about. Curiosity welcome. Conversation encouraged. *Image supplied by Peter Bobroff.*





Council's 2025 Satisfaction Survey – results



Media release Thursday 12 February [This is a summary –Ed.]

The SMRC's Community Satisfaction Survey is the fifth consecutive year of a regionwide annual survey using public feedback to measure and track Council's performance.

Overall satisfaction score has improved modestly to 2.35 out of 5 compared to 2024's average of 2.33.

Demerger business case. 59% of respondents supported the development of a case to return to the 3 separate councils in place prior to the 2016 amalgamation. A report re such a case was tabled at the February Ordinary Council Meeting 19 February.

Important services and facilities

- **High satisfaction and importance ratings** included sporting facilities, water supplies, waste and recycling services, bridges and related infrastructure and online services.
- **Highly important but with low satisfaction scores** included community services, pools, environmental monitoring and protection, footpaths and cycleways, councillor leadership, balancing development and community values, and development applications.
- **Sealed roads:** average satisfaction rose from 2.43 in 2024 to 2.6 in 2025.
- **Customer service** scored its highest ever level in 2025: 3.03 out of 5. **Enquiry handling:** the rating of 'very poor' dropped to 29%, its lowest level.

Taverner Research Group designed and conducted the survey, using industry standard methodology to ensure the results accurately represent local community sentiment.

[General road maintenance dissatisfaction score was 20%. The 'unsealed roads' category needs statistical interpretation outside this editor's ken. Full survey results are on the link below.]

<https://www.snowymonaro.nsw.gov.au/files/assets/public/v/2/council/ipr/css/2025-smrc-community-satisfaction-survey-report.pdf>

SMRC Media Release 20.3.2026



Councillor Luke Williamson formally censured at March Council Meeting.

<https://www.snowymonaro.nsw.gov.au/News-and-Media/News-articles/Councillor-Luke-Williamson-formally-censured-at-March-Council-Meeting>

Melodie Neal
Justice of the Peace
0402 350 077
Micalago Road





Here's the usual handy information about Hall hire

The Hall has all facilities for your function.

Hall hire rates

- a) Daytime: \$18.00 p/h. Refundable deposit bond: \$170.00 per event.
- b) Evening Event: \$295.00 + refundable deposit bond \$260.0.
- c) Equipment hire: (tables, chairs, urn, etc) for out-of-hall use: \$1 per chair, \$5 per table. Other equipment by arrangement with the Hall Committee.



Local fund-raising events can hire the hall at a reduced fee.

The tennis courts are free for community members to use. The Hall Committee is responsible for minor maintenance of the tennis courts and clubhouse and asks that players who have tightened the nets before a game loosen them when they finish playing. Please close the gates and take any rubbish with you.

BBQs: please clean them after use. Instructions are on the side. Sorry, there's no water supply at the oval. Please take your own.



A perennial maintenance problem for the Memorial Hall Committee has been grass control, usually done by volunteer or paid mowing. Naomi and Sam's three sheep are the current happy solution. As the last childcare/pre-school people threw their toys out of the cot and departed last year because they'd seen a mouse, there's no concern about children and animal poo.

Photo: Allan Lehepuu



Servo news – including yes, they have fuel!

The lessee of the Michelago Service Station, Omkumer ('Call me Om'), would like to inform the community that, contrary to some social media comments, the servo has plenty of fuel – for the moment, anyway, given the international situation. This was the case on 21 March.

The bowsers that have 'not in service' yellow tags do NOT indicate lack of fuel. There is a mechanical problem with these bowsers that is the responsibility of United to fix. The diesel bowser was temporarily not operating because Om was replacing the dodgy hose and pump handle at his own expense. He has also made some repairs to functioning bowsers.

United's head office dictates the daily price. More detail when *Magpie* has more space available.

SMRC Media release 27/3: there's a free NSW Government [FuelCheck app and website](#). Find the cheapest near you. Prices updated in real time for servos in NSW & ACT. *[All the info we have.]*



Little Bush Bubs

A meeting place for parents and little ones.



WELCOME TO

LITTLE BUSH BUBS

it takes a village - ours just happens to be Michelago

WEDNESDAY

10:30AM

MICHELAGO GENERAL STORE



HPR
Hills Plumbing & Renovations

0458 845 123 | charles@hpr.net.au

Renovations & Additions | Plumbing & Gas Fitting

Need a plumber? You need Charles.

Family-run business for Canberra & surrounds. Bathroom, kitchen & laundry renovations. All aspects of plumbing, drainage, gas fitting. Call for a free quote.

Managing Director Charles Hillman

P: 0458 845 123 E: Charles@hpr.net.au

Quality Painting



D & D Effects and Images
Superior Painting Services

Derek Bardsley
dbardsley8@gmail.com

ABN: 92460477467
0423 004 799

Specialising in Interior and Exterior Homes,
Units, Body Corporates.
Repaints and New Work

Derek will do the job well.

Fully qualified and with 15 years of experience.

He's rejuvenated the Michelago Railway Station in the project funded by the grant from Heritage NSW and has done other work around Michelago.

Reasonable rates.



MICHELAGO RURAL FIRE BRIGADE

**YOUR COMMUNITY-BASED RURAL FIRE BRIGADE
PROTECTS YOU|
NEEDS YOU**

*Are you new to the district? Please join us!
We can help you, your family and property: 'Prepare, Act, Survive'*

The Michelago Rural Fire Brigade

- is made up entirely of volunteers
- welcomes both male and female members
- values diverse skills and experiences
- has free, monthly training sessions
- has access to free training with the NSW Rural Fire Service Monaro Team
- collaborates with other rural brigades like Colinton and Anembo
- protects people and property against natural disasters
- provides fire protection for emergency services attending motor vehicle accidents
- issues fire permits
- participates in community fire-safety education programs
- is funded for trucks, equipment and Personal Protective Equipment (PPE) through the Rural Fire Fighting Fund and Local Government
- works with the community.

Be in the community — be in the Brigade

President – Brent Wallis

Enquiries

Captain – Abby McPherson – 0417 548 118



ALPACA POO FOR SALE



PACAWOOLLY

Great for the garden. Can be used immediately, just as it is and does not burn plants. Lower organic content (yet enough to improve soil texture and water holding), so it can go straight onto gardens, trees, roses, vegetables, fruit trees. Comparatively high nitrogen and potassium content. Minimal smell.

\$6.00 per bag.

Message Jo Gaha on 0417 288 857 to buy.

Pacawoolly is a small alpaca stud in Michelago specialising in fine alpaca yarn (in natural alpaca fleece colours) and handmade items.



'How good is our poo!'



Floral friends or flowering foes? Invasive plants in local gardens – SMRC media release 10.12.2025



[Below is a very short summary of the media release. There's more information on the Council website about environment, waste and weeds.]



Weeds. It's a simple term for a simple idea: plants growing where we don't want them, where they don't belong, or where they're doing harm.

Well-known weeds are Paterson's curse, dandelions, blackberry, bindies, thistles, ivy and lovegrass, to name only a few.



However, many plants that 'spread like weeds' (like gazanias) are freely available at nurseries and can take over native plants and grasses.

The problem with a term like 'weeds' doesn't lie with the obviously bad or the obviously good at either end of the weed-or-not scale.

Weed legislation, regulation and intervention in NSW is focused on preventing and combatting the worst-of-the-worst weeds and the ones that are at such low levels that eradication or containment is still considered feasible.

Garden responsibly: know your weedy plants and please, please, never dump garden waste on roadsides or natural areas.

[Click here to take the Snowy Monaro Weed-wise Gardening Quiz.](#)

Visit www.growmeinstead.com.au for an easy reference and further information about responsible garden plant choices.



Easter Egg Hunt – Saturday 4 April, 9.45 for 10 am.

Sam and Fiona will coordinate the laying of chocolate eggs and also the provision of supplies for morning tea. To ensure there's enough, please book in on the link below. Sam will post it also on Facebook's Michelago Notice Board. On the day, please gather in the park opposite the station.

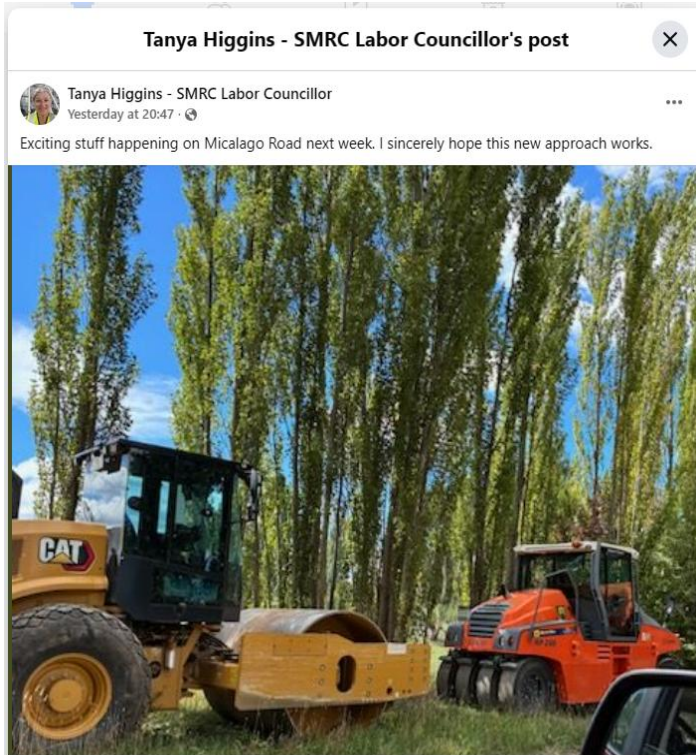
www.events.humanitix.com Michelago Easter Egg Hunt 2026





Micalago Road update 21 March.

Image 1 and messages are from Facebook's Michelago Community Notice Board.



Further to information in Tony Lickiss's letter (p.5) is this: 21/3: Cr Higgins added on the Notice Board: '... Horseshoe Lane to Karinya Plains Road – the team will look at the road and grade if necessary. Karinya Plains Road will be graded.'

L: Saturday 28 March, looking back to the old railway bridge. There's a big improvement already. There are fewer deep ridges, but there's obviously more work to do.

Garden Group, 22 March, tennis courts clubhouse

Jenny Wholohan



This gathering was punctuated by the sound of youngsters' tennis lessons – so great to see the local courts being used. We mainly did planning – which veggies to sow when, propagation (to get free plants) and some more visits to local gardens to get some inspiration. Lyn contributed some great

homemade seed packs to share – very handy. Thank you, Lyn.



We marvelled at the array of fungi sprouting up after the rain, including this huge specimen, shown against an adult shoe.



Next meeting: Sunday, 19 April, 2 pm, tennis clubhouse.

Beautiful craft supplies and workshops



Natural fibre craft supplies from around the world

Craft with intention and savour the gentle pace of slow making with our unique fibres and tools.

We offer a curated range of sustainable and ethically made fibre art supplies. Chosen for their quality, sustainability, and connection to traditional craft, helping you create beautiful, lasting pieces.

Explore our workshops and more online.

Get in touch for free local pick up in Michelago Village.

THIS LUSH CORNER
www.thislushcorner.com



Michelago Café wins in a cakewalk

Congratulations to Cooma Show winners:

- 1st place – carrot cake baked by Belinda
- 2nd place – caramel slice and brownie baked by Veronica
- 3rd place – country apple cake baked by Belinda and inspired by Cath Cotter
- 3rd place, Junior Section – cookies baked by Olivia.



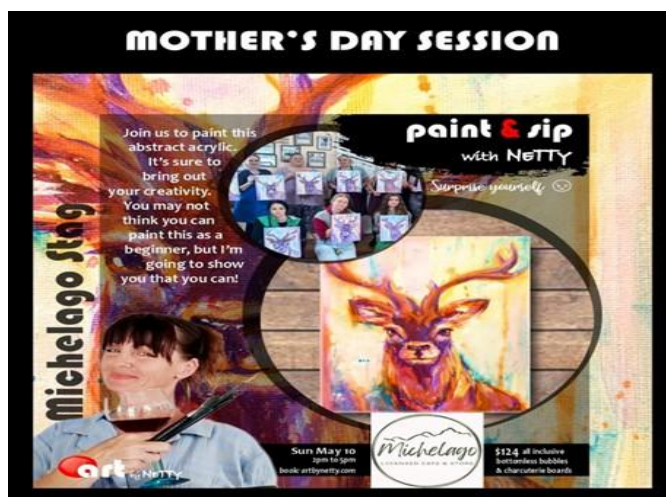
The café should provide serious competition in the next Great Michelago Bake Off 🍪

Mothers Day event at the award-winning Michelago Licensed Café

Paint & Sip with Netty. Sunday, 10 May. 1–5 pm. For both beginner and continuing artists.

Eat and drink all you want while you create with Netty's expert guidance. Focused group fun. Charcuterie and 'bottomless bubbles'. \$124.

Book: artbynetty.com





Commonwealth Home Support Programme

Council offers Snowy Monaro residents local access to Commonwealth Home Support Programme (CHSP) services.

The CHSP is an Australian Government initiative that helps older people live independently in their own homes and communities.

How to get support

- Call My Aged Care on 1800 200 422 or visit www.myagedcare.gov.au
- You'll get a call to organise your assessment appointments
- If you're eligible, the final step is a home visit from Council for a property assessment and to establish your personalised care plan
- Your needs and required support services are reviewed once a year

Available services

- Personal care and support
- Light housework
- Meal preparation
- Meals on Wheels
- Shopping assistance
- Transport
- In-home or centre-based respite
- Social engagement
- Home maintenance
- Home modification

Eligibility

- Open to ages 65+, or 50+ for Aboriginal and Torres Strait Islander persons
- Living at home and needing help to continue living independently

Learn more online at <https://qrco.de/CHSP>, or contact Council on 1300 345 345.



Michelago Magpie information. Get the Magpie free by email: send name and email address to newsletter@michelagoregion.org.au Print copies are \$2. This goes to the Railway Station maintenance. Previous issues can be read on www.michelagoregion.org.au

Copyright: all *Magpie* articles and photos are © copyright of the authors and photographers. Copyright law says they may not be reproduced for public dissemination (e.g. Facebook) without permission of the authors/photographers. If so reproduced, items must be attributed. To copy photographs of private individuals, unless they are crowd shots, you must have the permission of those portrayed or, in the case of children, written permission of their parents/guardians. Such individuals have given their consent to publication of photographs only to the *Magpie*.

Advertisements: businesses can purchase advertisement space for \$20.00 per issue (about a quarter or half a page, depending on space). Full-page ads are \$30. All proceeds help the MRCA maintain the heritage-listed Michelago Railway Station. Non-business ads are free.

Contributions: photos (jpg preferred, please) and news items are welcome. Please send them to newsletter@michelagoregion.org.au Please give your name and put *Magpie* in the subject line. Published items will be attributed. If you have events or activities planned and would like them listed in the *Michelago Magpie's What's On?* list, please email them to newsletter@michelagoregion.org.au The MRCA committee reserves the right to edit contributions for length and clarity.

Aims: to publicise community events and activities and promote community identity. Yes, the Facebook pages do that, but the *Magpie* tries to give a more cohesive, detailed picture, and one that builds up a Michelago history.

Photos and articles, unless otherwise accredited, are by Leanne Pattison, *Magpie* Editor.

Michelago Region Community Association information – please join/renew.



To join the MRCA, first download the membership form from the home page at www.michelagoregion.org.au and email it to mrca@michelagoregion.org.au

Questions? Please email.

It's only \$10 p/a single and \$15 p/a family. Joining or renewing, you can pay by EFT: BSB 633000 Account number 126401058

Account name: Michelago Region Community Association Inc. Please include your name.

There are **good reasons** for joining the Michelago Region Community Association:

1. The more representative we are, the more we can achieve for our village and region. All funds go to running costs, including upkeep, rental and insurance for Michelago's heritage-listed Railway Station. The Committee applies for government grants and occasionally organises other fund-raisers.
2. It's sociable – you know what's happening, who's doing what, and you participate only if you want to.

The MRCA Committee <http://www.michelagoregion.org.au/mrca/>

Meetings are open: 2nd Wednesday of the month, 6 pm, Railway Station. Next: 11 Feb. All Michelagoans are welcome. The minutes are on the website: www.michelagoregion.org.au



What's on?



Please send quick updates of what's coming up, what's on and any corrections to newsletter@michelagoregion.org.au If the *Magpie* knows about it, it will be here.

Advertise in the *Magpie*: contact the Editor newsletter@michelagoregion.org.au

Regular Venues, contacts and times can change; information is here as received.

- **Bingo:** 1st Monday of the month. Licensed café & store. Happy Hour, dinner 6 pm. Bingo 7 pm.
- **Bush Bubs** get-togethers for young mums and bubs. Shop, Wednesdays, 10.30.
- **Choir** Thursdays, 7–8 pm in school term, St Thomas Church, Ryrie St. Occasional cancellations: call Jenny 0400 484 485 to check. See p.10.
- **Colinton Fire Brigade** Training 2nd Saturday of the month, from 1pm. 4574 Monaro Hwy, Colinton. Contact: secretarycolintonrfs@gmail.com
- **Michelago Fire Brigade** training usually second Sunday of the month, 9am–1pm. Contact details: MRCA notice board at the Michelago General Store. Captain Abby 0417 548 118.
- **Garden Group (formerly Seed Savers)** Enquiries: SMS Jenny 0400 484 485 or jenny258@bigpond.com
- **Hall** Committee general meeting. Hall. Currently every 2nd month, 3rd Wed 6 pm.
- **Hall bookings** memorial.hall@michelagoregion.org.au 0494 178 469. Current hire rates p.11.
- **HIIT** (high intensity interval training) exercise class with Peter (0417 427 494). Hall. Sat 8am. \$5 just to cover Hall hiring cost. 'Works for all ages.' See article in *Magpie* 40. Call Peter to check class is on.
- **Library Outreach Service.** Monthly, 4th Thursday to collect pre-orders outside the school 10.30–11.30. Next delivery April 23. See SMRC site & *Magpie* 36 for how to order books. Calendar is on the shop noticeboard.
- **Massage** Michelle O'Leary comes to you with her massage table. 0401 535 414
- **MRCA** general meeting (open). Railway station. Usually monthly, 2nd Wed 6 pm. Next: 8 April.
- **Pilates** Saturdays, 9.30-10.15 am in school term. Hall. See flyer on shop noticeboard.
- **Pony Club** Monthly 2nd Sunday. Enquiries: President: Romney (0428 297 514, romney.kelly@outlook.com) or Secretary: Sarah Nockles (nockles.sarah@gmail.com). Also see <https://ponyclubaustralia.com.au>
- **Senior Lunch Group** 1st Monday of the month, 12.30 pm. Location varies. Call Janet 0414 785 865 to check.
- **St Thomas** Anglican Church. Holy Communion. Monthly, 3rd Sunday 11 am.
- **Trail Riders** Usually monthly, 1st Sat. Check details on Tinderry tab of Australian Trail Horse Riders Association (ATHRA). President: John Harris. 0417 246 289 << jh1950@me.com >>

One-offs (that we know about) Venues and times can change. Information is here as received.

April–May

April 4. Easter Saturday. Easter Egg Hunt. 9.45 in park opposite station for 10.00 start. See p.14.

April 5. St Patrick's Catholic Church. Easter Sunday. Mass 8.00 am.

April 25. ANZAC Day Service & morning tea, Railway Station, 10 am. Bredbo Pub's 2UP, 2–6 pm.

May 3. Michelago Heritage Festival & Markets, Railway Station, 10–2. See p.1 & 2.

May 10. Mothers Day. Paint 'n' Sip, Michelago Licensed Café. See p.17.



Copyright: all articles and photos are © copyright of the writers and photographers.



This edition of the *Magpie* was printed in Cooma 0428 484 999