

~ Michelago Magpie 21 ~

The Michelago Region Newsletter
from your Michelago Region Community Association
3 November 2023

All issues on www.michelagoregion.org.au

Order email Magpies / enquiries: newsletter@michelagoregion.org.au



Free by email. Print copy at the Michelago shop \$2

In this issue: Community Day 1-3; Choir & Carols 3; Alpaca farm & mill tour 4; Remembrance Day & poem 'Silence' 4; Walk in the Tinderries 5; Creek weeds, Seed Savers, Xmas Day Mass at St Pat's, Cricket 6; Pop-up shop, Memorial Hall 7; **Gingerbread Houses 8 – order now**; Living with lovegrass 9-10; Steam & poo lovegrass tactics 10; poem 'Revenge' 11-12; Poets 12; Council 14; No termites in the Railway Station 14; Magpie info 16; MRCA info 16; Magpie calendar 17.

Services: Sewing 10; Bricklayer 12; Hall bookings 12; Yoga 13; Yless4U 15.



Community Day at the Michelago General Store, 21 October



L: Hard-working staff Deb and Jess R: Happy community people Billie, Mabel and their mother, Shannon Ward

Below: Sophie, Lauren, Ian and Gregg at the popular RFS BBQ.

What fire trucks are really for.





L to R: Belinda Hayes, shop owner and organiser of the day, promotes the Magpie.

Will Kelly and big son Patrick.

Emily and little pet Periwinkle.



Gardeners had a wide choice: Feel Well Farm, Tablelands Trees & Shrubs, Landcare, and Caitlin & Mitch's seedlings.



Craft makers included (L to R): Dot Higgins (with daughter Cr Tanya), Emily Southern, Beth Vincent with her 'Fairhaven' products, and (below L)

Ngarigo artist Gail Neuss. Gail also had bush-based food. Other local foods came from Simo Bozinovski (hazelnuts from Bunyan) and olive oil and many other products from Vele's Garlic Kingdom (garlic-infused honey, anyone?).





Above: Michelago Fire Brigade stalwarts Rob and Peter took a break from some intensive barbecuing, John Tollis enjoyed his showbag and RFS play-helmet, and Abby made sure kids knew the importance of seatbelts in all vehicles.



L: Snowy Monaro Regional Council's Susie Diver and Tobi Varcoe distributed red, emergency-supply 'Get Ready' bags, shower timers and informative pamphlets about water-saving and road safety facilities. They answered many questions about Council's work and responsibilities.

It was a busy and good-humoured four hours in and outside the Michelago General Store (usually known as 'the shop'). Parking along the street and at the Hall worked well. The weather was superb.

Thanks to Belinda Hayes for organising this community event.



That Bridge

Last month's *Magpie20* had a full update on The Bridge Situation, including the efforts of Deputy Mayor Cr Higgins to move matters along.

Since then, *Magpie* has heard a whisper of some progress. See p14. We wait.



Choir – 'fun and joyful'



Choir practice continues on Thursdays, 7pm at St Thomas Church, Ryrie Street. Choir leader Dee is away for a month but choir members are still meeting to work on their Christmas carols.

All voices welcome – come and join in!



Creative Commons images



Carols at the Railway Station – Saturday, 23 December, 6pm for about an hour.

Jenny says: 'Everyone is most welcome to come along. Bring a chair and sing along if you wish. It'll be a very casual, fun get-together.'





Alpaca Farm and Mill Tour

Jo Gaha



Sunday 29 October. The Southern Harvest Association held two farm visits to local farms. One was to Pacawoolly in Michelago to meet and learn about alpacas and the other to Boston Fine Fibres in Burra, one of a handful of alpaca fibre mills in Australia.



L: Meet the alpacas. R: Learn about processing the fibres. Photos: Gary Morris



Participants met the farmers: Jo Gaha and Gary Morris at Pacawoolly, and Tanya and Jim Boston at Burra, and discovered the delights of breeding alpacas and the process of turning their fine fleeces into yarn. Lunch was served at Pacawoolly (cold meats, salads, vegetarian dishes and bread) all showcasing local ingredients from SHA farmers and producers.

L: Pacawoolly alpacas after shearing, December 2021. Photo: L.Pattison



Remembrance Day

The 11th hour of the 11th day of the 11th month.

There will be a simple ceremony along the usual lines at the Michelago Railway Station. People are invited to gather for a 10.40am start, lay a wreath if they wish, and to mingle at the General Store afterwards.



Silence

A breeze across the poppy fields
The sounds of battle quiet
The ghosts of soldiers never leave
Mates forever by their side
In foreign lands they gave their lives
Their families left to grieve
We gather now to pay respect
And think of those now free
Stand still and straight this armistice
In silence at this hour
Remember those who gave their lives
For the peace we live with now.



Leanne Thurling



A Walk in the Tinderries

Saturday 18th November 2023 – 9:30am

[Michelago Landcare](#) members Julie and Markus invite you to visit their stunning property on the top of the Tinderry Range. Join us for a walk over granite outcrops, through montane shrubs, heathlands, and mixed woodlands, and enjoy the spectacular views and abundant wildlife. Binoculars and cameras are a must! This tour is being run together with [Friends of Grasslands](#) for the first time.



Location: Meeting place and parking area is the 'White Pinch' on Tinderry Rd.

Directions: The White Pinch is a pull-over area, with a Land for Wildlife sign on a large dead tree and on the day a Landcarer to meet visitors. Drive 11.1km from Burra Rd (Michelago side), or 18.5km from Jerangle Rd (Anembo side). Note: Tinderry Road is mostly unsealed but suitable for 2WD vehicles, however care should be taken as it is narrow, winding and steep in places.

Walk: 2-3hr easy bushwalking, some on tracks, with short sections of moderate inclines and granite navigation, and a little



off-track pushing through re-growth bush. The weather is typically milder than the valley floor, 5-7 degrees cooler and sometimes can be very windy. Long pants, good solid walking shoes/boots, hat, sunglasses and sunscreen are strongly recommended.



Catering: BYO snacks, lunch, drinks and plenty of water.

RSVP: Numbers are limited; please register your interest by 16th November to m.buchhorn@outlook.com or 0417 281 429. Please ensure that you register as in case of unsuitable weather (rain, snow, extreme winds, cloud base below 1200m) we will reschedule to 19/11 or later.





Weed control at the creek

Or, more formally, 'Riparian woody weeds: treatment project on Michelago Creek' (see *Magpie20* p11 for planning details).



After Landcare's long process of contacting landholders near the creek for permission, the treatment (including inoculation of some larger plants) has been done in the selected areas.



Seed Savers

Sunday, 22 October. 'Seedling Savers' would be more accurate, as plant babies from Spring-sprouted seeds were shared, potted up and borne away to various gardens by eight keen people.

There were pumpkin, zucchini, broccoli and pea seedlings, and two large trays of varicoloured cosmos and marigolds.

All the while, there was constant talk about garden



beds, soil ph, bugs, successes, failures and methods of propagation.



Next meeting: Sunday, 26 November at Jenny and Allan's, 2—4pm. Call Jenny for directions: 0400 484 485



Christmas Day Mass at St Patrick's

Saint Patrick's Michelago invites the community to attend our 8am Mass on Christmas Day. All are very welcome. Mass will be celebrated by Father Tony.

Michael will be organising a special Christmas hamper appeal and raising funds for small gift vouchers for disadvantaged children. More to come on this.

Kerry Rooney



It's cricket season again



Sunday 29 October. The sun shone, visitors' cars were neatly lined up at the edge of the Oval, spectators relaxed on deck chairs with picnic baskets, and the crack of leather on willow was again heard in the land.

The teams: Mighty Michelago vs How Good Are Tins. The latter was a compilation team from Cooma and around the district, according to a player *Magpie* accosted somewhere near the fence, possibly at silly mid-off. Or not.



Pop-up shop at the Railway Station

www.thislushcorner.com

Local craft specialist Leah Oliver's pop-up shop for her This Lush Corner, October 27 to 29, was so successful that she plans to run it again next year. Customers came from Canberra, Cooma and all through the region for her offerings of Earth-conscious fibres, handmade items, tools and kits.

Leah's email is thislushcorner@gmail.com



Memorial Hall

Jenny Wholohan, Secretary, Michelago Memorial Hall

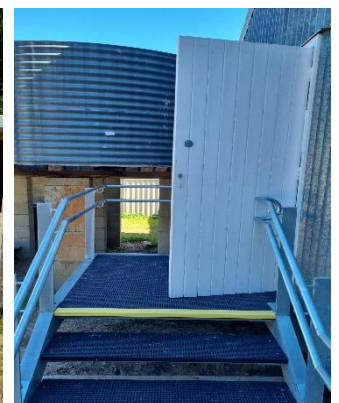
- The acoustic curtains have arrived and will be installed as soon as handy committee members have time to do the job.
- Further consideration is being given to the possibility of getting a stage curtain or other options of acoustic buffers in the stage area.
- The Committee has managed to get full funding for the purchase and installation of a dishwasher in the Hall. Progression of this project is in hand.
- After the installation of solar panels on the Hall roof, application was made for a further grant for solar batteries for energy storage, but the committee has just heard they have not been successful with this grant. Further applications for other grant funding will be pursued, though.
- Thanks to the Community Grants Funding, the Hall has just had new stairs installed outside the kitchen and both rear exits
- Following a successful and fun time last year, there will be another fundraising event of purchasing and decorating Gingerbread Houses at the Hall, 3 Dec. See p8 for ordering.



L to R: Anna & Allan show one of the new acoustic curtains.

Allan has cleaned and undercoated the shabby cubby house behind the Hall.

Irony: Council's initiative to install OHS-compliant steps. This pic is of one lot at the back. Shame that the new rail means the door now won't open fully. OHS? Communication with Council has commenced.





Gingerbread Houses – Hall fundraiser – Sunday 3 December – Order by 17 November



Scan me to order online or contact Belinda on 0411 043 027 for cash or bank transfer orders.

MICHELAGO HALL GINGERBREAD HOUSE FUNDRAISER

The Michelago Hall Committee are excited to be running a Gingerbread House Fundraiser and Community Decorating get together again this year! Get your family & friends together to create your very own delicious masterpiece.

Come along to the hall on Sunday 3 December from 3pm onwards to decorate your house with us OR you can do it in your own time all from the comfort of home!

Delicious and premium quality Gingerbread House Kits from Gingerbread Folk include vegan gingerbread parts, baseboard, quick drying royal icing (in powdered form to use at your leisure),



Gingerbread House Kit: \$42 (Gluten-free option available)
Christmas Tree Kit: \$34
Order by FRIDAY 17 NOVEMBER

There's also a link to pay online here if people aren't keen on the QR code: <https://square.link/u/Ty258RfK>



Three images from last December's gingerbread house workshop. It was creative and fun.





Living with lovegrass

Elizabeth Price



This was a long, information-rich session at the Michelago Hall, 7 October, 10.30—2. A paddock walk for lovegrass inspection was included. Elizabeth's precise report below captures the essentials.

Presenter: Jo Powells, Senior Agriculture Adviser, Local Land Services

Photo: Georgeanna Storey



- African Love Grass is endemic in our region. The realistic aim of ALG control is to minimise damage and to contain the spread.
- ALG is *Eragrostis Curvala* and originated in South Africa. There are multiple biotypes present in our region.
- It easily colonises disturbed ground and in its home range is recommended for erosion control.
- A tropical grass, it grows abundantly in summer and doesn't grow in winter.
- It produces 300 – 1000 seeds per seedhead. Seed longevity is 3 – 17 years, and 50% are viable after 5 years. This presents a challenge for control. It has overtaken previous temperate grassland areas, both native and introduced.
- It has low feed quality, and is much less digestible for stock than temperate grasses. The quality of new growth declines rapidly after about 30 days.
- Management options are:
 - Slashing/mulching
 - Steaming
 - Burning (after consultation with the RFS as ALG is highly flammable)
 - Fertilising to promote other pasture species
 - Biological control, eg the African Grass-feeding Wasp (not enough known yet)
 - Grazing management
 - Physical control (chipping)
 - Biosecurity (protecting areas where ALG has not invaded by care with people and vehicle movement etc)
 - Chemical control eg Glyphosate (non-selective) and Flupropanate (selective)
 - Integrated weed management (long-term and targets biological weaknesses of species).

A combination of methods is usually needed.

Trials at Bredbo aimed to investigate ways to improve the feed quality of ALG. Burning and fertilising selected plots resulted in slight improvement in grazing preferences, but the economic value of this option is questionable.

Where ALG has invaded, landholders need to establish refuge zones for livestock and asset protection zones where the grass is kept very short as a safety measure.

Brett Jones, Snowy Monaro Council's Weeds and Biosecurity Officer, also spoke briefly and explained that under current legislation it's no longer compulsory for landholders to control ALG. The aim now is to manage it. Advice on strategies is based on the degree of invasion.



Update on steam and poo tactics with lovegrass

A demonstrated steam treatment on a strip of lovegrass at Pacawoolly in Clearview Road last December was clearly effective. The photo at below left was taken recently.

A report in *Magpie11* (pp11—12), of that demonstration details the availability, advantages and disadvantages of the steam treatment. (All *Magpies* are on www.michelagoregion.org.au)

The workshop's summary above notes fertilising as an organic control, as lovegrass prefers poor soil. Pacawoolly's Jo and Gary have fertilised a large area with their plentiful alpaca poo – note the dead lovegrass in the photo below right. The downside is that not only desirable grass finds enriched soil to its taste; other weeds, like the horehound in this photo, also do. However, these other weeds are apparently easier to control than lovegrass.



Photos:
Gary
Morris



JENNY'S REPAIRS & ALTERATIONS SERVICE



**** very reasonable rates ****



Anything from sewing on buttons, altering hems, resizing, repurposing, to adjusting a formal garment. Also mending, patching or altering such household items as curtains, bedding linen, cushion covers, etc.

You may not need to throw out that favourite piece you love to wear, or maybe there's something you've just bought that doesn't really fit.

Save yourself \$\$ by keeping items useful for longer and help to minimise waste

Contact Jenny: Ph. 0400 484 485 Email: jenny258@bigpond.com



Revenge – a true story

Not long ago in these whereabouts,
An old farmhouse
Was in the grip of a drought.
The folks there within
Were not able to flush,
As water was scarce, so they couldn't use much.

*The composting loo was a blessing instead
And into it, daily, the family would head.
Things all went quite smoothly
Till the contents of that
Threatened to rise whenever they sat.*

The matriarch cried,
'I know what to do:
We will take up the shovels and bury this poo!'

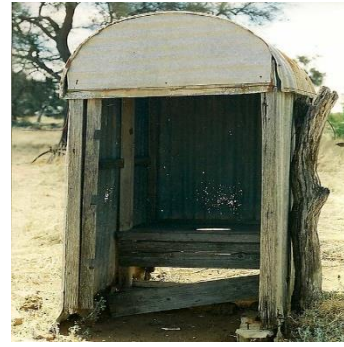
*The day it was hot,
The ground hard as rock.
The good folk were flustered
With their still-loaded pot.*

The matriarch sighed,
Defeated in her role
Until she espied
An old wombat hole.
The hole was a size
Which would perfectly fit
The pot on the ute
That was still full of shit.

*The hole looked quite vacant.
It seemed kind of empty.
The kids were outraged
But the matriarch said,
I'm really quite certain
The incumbent is dead!*

So – the decision was made
And the contents were tipped.
The dirt flew off shovels
Till nothing was seen
Of the repurposed pit!

*However ... the next morning,
Right there on the step
Was a steaming deposit
Of square brown dimensions
From a really mad wombat
With deliberate intentions!*



The matriarch stumbled,
 Stopped dead in her tracks.
 Could that be the wombat
 On whom they'd imposed?
 Could it make that connection?
 Used its nose, she supposed.

*How did it get in
 Through the fences and the gates
 To leave us this message
 To here contemplate?*

Now the legacy continues ...
 For every now and then
 A wombat crawls under the floor
 Beneath the matriarch's bed
 And by his own foetid stink
 Declares – he was not dead!

By A Michelago Matriarch

Creative Commons images



Michelago Poets

October's small meeting had fun with the theme, 'Make somebody laugh', which produced, among other rib-tickling works, the *Revenge* story above.

The last meeting for the year, Sunday 5 November (3pm at the Railway Station), will have a Christmas theme.



Call Wayne for anything made of bricks or rocks



SOLID AF BRICKLAYING

New Homes	Extensions	Brick Walls
Block Walls	Letterboxes	Rock Walls
0456 949 771		fb: solidafbricklaying



Memorial Hall bookings – 0493 638 878 or memorial.hall@michelagoregion.org.au

This is the Schedule of Fees for the hire of the Michelago Memorial Hall for the financial year 2023-2024.

- a) A flat fee per hour: \$17.00
 Refundable Deposit Bond: \$170.00
- b) Private Evening / Party Function: \$240.00
 Refundable Deposit Bond: \$250.00
- c) Hire of equipment, eg tables, chairs, kitchen, to be arranged on a case-by-case basis with the Committee.



Breathe, Move, Relax:

Thursday 6.30pm

at Michelago Hall

\$20



Yoga is for everyone, no matter your body type!

Slow, mindful movement for improved strength, flexibility, mobility and relaxation. All shapes offered can be modified to suit whatever is most beneficial for your body.

Yoga can help to decrease stress and improve your overall mental health & wellbeing, help with managing back pain, assist in the recovery from injuries or just generally improve your overall strength, mobility and balance.

Please BYO mat, blanket & cushion.

Please message or call Belinda on 0411 043 027 to book in (bookings preferred just in case the class is cancelled for any reason) or for any additional information.

Private sessions are also available if you're not sure about coming along to a class or if you have something specific you'd like to work on.



Council Corner



Snowy Monaro Regional Council's Deputy Mayor, Cr Tanya Higgins, has sent this report.

At this month's Council meeting, I:

- Ascertained that the Ryrie St Bridge approvals are expected back from UGL in early November and that as soon as Council has them work will commence straight away.
- Proposed that Council undertake a mid-term review of the Waste Management Strategy in the next financial year. This was agreed to by Council, so if you have any questions, concerns or opinions about the Michelago Bank of Bins, please let me know.
- Supported a proposal to seek a NSW Planning Gateway Determination to rezone Smiths Road, outside of the LEP process, since that is still on hold. This was not passed by Council, so Smiths Road continues to wait until the Rural Land Use Strategy and the Settlements Strategy are passed by Council.

If you have any issues that you would like me to assist with or anything you would like me to raise at Council, I can be contacted on 0420 970 544 or at

tanya.higgins@snowymonaro.nsw.gov.au

Tanya Higgins, SMRC Councillor



No termites in the Michelago Railway Station

27 September. UGL's termite inspection contractors sent their Gary for the regular check at the Railway Station. He made a thorough search and found many signs of old infestations but no active ones. Control measures have been effective.

He found one active termite nest in the ground past the northern end of the platform, near the old green shed. He said he would report this, as well as the more pleasing findings, to his employer.

He said he would also report that the pinewood in the termite traps around the station buildings needs renewing.

As he does not report to the MRCA, which only leases the station buildings from UGL, the Committee has not seen his report.



L: No termites

R: Termite nest south of the platform.





Connecting Rural Families

30/15 Unlimited

\$80 per month

New!!

Up to 50Mbps

\$ 99 per month

New!!

Up to 100Mbps

\$129 per month



Locally Based Helpdesk



Rural Internet Solutions

www.yless4u.com.au

(02) 62303699

Internet Packages to suit all needs!

Plans starting from

\$ 35 per month



Magpie information

Get the Magpie by email: send name and email address to

newsletter@michelagoregion.org.au

Previous issues are available on www.michelagoregion.org.au

Copyright: all *Magpie* articles and photos are © of the authors and photographers. That means they may not be reproduced for public dissemination (eg Facebook) without permission of the authors/photographers. If so reproduced, items must be attributed. To copy photographs of private individuals, unless they are crowd shots, you must have the permission of those portrayed or, in the case of children, written permission of their parents/guardians. Such individuals have given their consent to publication of photographs only to the *Magpie*.

Advertisements: businesses can purchase advertisement space for \$30.00 for three issues (it might end up being a half-page or a full one, depending on space). Non-business ads are free.

Contributions: photos (jpg preferred, please) and news items are welcome. Please send them to Lpatt@internode.on.net Please give your name and put *Magpie* in the subject line. Published items will be attributed.

If you have events or activities planned and would like them listed in the *Magpie* calendar, please email them to Lpatt@internode.on.net

The MRCA committee reserves the right to edit contributions for length and clarity.

Aims: to publicise community events and activities and promote community identity. Yes, the Facebook pages do that, but the *Magpie* tries to give a more cohesive, detailed picture.

Photos and articles, unless otherwise accredited, are by Leanne Pattison, Magpie Editor.



MRCA information

To belong to the MRCA, first download the membership form at www.michelagoregion.org.au It's only \$10 p/a single and \$15 p/a family. To renew, see the same for bank details, and please include your name.

There are **four good reasons** for joining the Michelago Region Community Association:

1. The more representative we are, the more we can achieve for our village and region.
2. You get updates from Council.
3. All funds go to running costs, including upkeep, rental and insurance for Michelago's heritage-listed Railway Station. The Committee applies for government grants and occasionally organises other fund-raisers, depending on available personnel.
4. It's sociable – you know what's happening, who's doing what, and you participate only if you want to.

The MRCA Committee <http://www.michelagoregion.org.au/mrca/>

Meetings are open: 2nd **Tues** of the month, 6 pm, Railway Station. All Michelagoans are welcome. The minutes are on the website: www.michelagoregion.org.au



~ Michelago Magpie Calendar ~

Please send quick updates of what's coming up, what's on and any corrections to newsletter@michelagoregion.org.au If the *Magpie* knows about it, it will be here.

If your friends want to be on the mailing list for the *Magpie* and its calendar, send names and emails to the above address.

Previous issues of the *Magpie* are on www.michelagoregion.org.au

Regular (Venues, contacts and times can change; information is here as received.)

- **Choir** Thursdays, 7-8pm, St Thomas Church, Ryrie St (next to the police station). See **p4**.
- **Fire Brigade** training second Sunday of the month, 9am–1pm. Contact details: MRCA notice board at the Michelago General Store.
- **Hall Committee** general meeting. Hall. Monthly 3rd Wed 6pm.
- **Hall bookings:** memorial.hall@michelagoregion.org.au or phone new number 0493 638 878. Current hire rates: **see p5**.
- **HIIT** (high intensity interval training) exercise class with Peter (0417 427 494). Hall. Sat 8am. \$10. 'Works for all ages.'
- **Library.** Mobile library 9.45—11.30, Mondays, outside the school. See below. (See *Magpie14* for complete library schedule. It's also on the Shop's MRCA Noticeboard).
- **MRCA** general meeting (open). Railway station. Monthly 2nd Tues 6pm.
- **Pony Club.** Monthly 2nd Sunday. Enquiries: Rhys (0401 778 004) or Alisha (0422 623 304) or email michelagoponyclub.secretary@gmail.com Also see <https://ponyclubaustralia.com.au/>
- **Pre-School.** Hall. A new teacher hasn't been appointed yet. Pre-school had been weekly, Mondays 6am–6pm. *Magpie* has rung and emailed Monaro Mobile Pre-School. No response.
- **Seed Savers.** Usually 3rd Sunday of the month. See below for November date. To check dates and locations or if you have other questions, please SMS or email Belinda: 0411 043 027 or hello@michelagoyoga.com.au
- **Senior Lunch Group.** 1st Monday of the month, 1pm, the Shop.
- **St Patrick's** Catholic Church. Mass monthly, usu. 2nd Sat, 5.30pm. Updates on Facebook's Michelago Noticeboard.
- **St Thomas's** Anglican Church. Holy Communion. Monthly, 3rd Sunday 11am.
- **Trail Riders:** usu. monthly, 1st Sat. Check details on Tinderry tab of Australian Trail Horse Riders Association (ATHRA). *Magpie 4* has a feature write-up. President Don Munns 0407 235 407. Membership – Secretary Heidi Dreyer 0434 197 122.
- **Yoga:** Thursdays, 6.30 pm, Michelago Hall. \$20. Enquiries: Belinda 0411 043 027. For all bodies.

One-offs (that we know about) (Venues and times can change; information is here as received.)

November

- **A walk in the Tinderries.** 18 Nov. 9.30. Details p5.
- **Mobile Library.** Monday 6 and 20 Nov. 9.45-11am.
- **Poets:** Sunday 5 November, 3pm, Station. Theme: Christmas.
- **Seed Savers.** Sunday 26 November 2-4pm. Potting mix, rooting hormone, pots supplied. Donations, please. At Jenny's. Details p6. SMS Belinda for more info 0411 043 027 or Jenny 0400 484 485.

December

- **Gingerbread Houses** Creative family fun as last year (see *Magpie11*). Hall fundraiser. Details p8. Order by 17 Nov.
- **Christmas Carols with the Community Choir.** Railway Station, 23 Dec. 6pm.
- **Christmas Mass, St Patrick's.** 25th, 8am.

