

~ Michelago Magpie 20 ~

The Michelago Region Newsletter
from your Michelago Region Community Association
4 October 2023

All issues on www.michelagoregion.org.au

Order email Magpies / enquiries: newsletter@michelagoregion.org.au



Free by email. Print copy at the Michelago shop \$2

In this issue: *Where's our bridge?* 1-2; Councillor Tanya Higgins reports 2-3; Community Day Out 4; Choir 4; Fire Brigade 5; Hall 5; Pop-up shop 6; Seed Savers 6; Serrated tussock 7-8; Piano tuner 8; Yoga change of date 8; HollowHog 9; Fish apology 10; Weed Whacking 10; Poets 11; Station sensor lights 11; Big grant for railway station repairs 11; Riparian woody weeds project 11; Clive Kelly Oval 12; Wayne's Walls 12; Alpaca farm & mill tour 13; Repairs & alterations 13; Yless4U 14; Living with lovegrass workshop 15; Magpie info 16; MRCA info 16; Magpie Calendar 17.



Where's our bridge?



Above: the site for the bridge joining Ryrie Street to Micalago Road, seen from the end of Ryrie Street.

Funding was approved, as all concerned residents know, in 2020. Council staff and elected Councillors have jumped through all their regulatory hoops and are thoroughly fed up with external bureaucratic delays.

The current situation: **1.** UGL has given approval for the small amount of their land to be used by the bridge. **2.** Construction plans *now* have to be approved by a separate department in UGL. Is this hard? **3.** *Then* UGL's approval has to be approved by the NSW Department of Transport.

Cr Tanya Higgins has been asking for a timeline for this process. She has now taken the issue to MP Steve Whan.

She says the complicating issue is that there is so much legislation around the use of railway land. Apparently, Michelago's project is not the only one being held up by the many requirements for various levels of approval.

As MRCA President Di Fett wrote to the program goodmorningmonaro@exemail.com.au recently in a question to the Mayor:

'The Michelago Bridge is an essential connector for the two main streets of Michelago – Ryrie St and Micalago Road. Without the bridge, school children who could otherwise ride their bicycles to school have to be driven onto and off the Monaro highway in dangerous traffic. The Michelago RFS has to wait for Micalago Road residents to navigate the Monaro Highway entry and exit before it can deploy a firefighting team.'

Not that this is news to anyone in Michelago ...



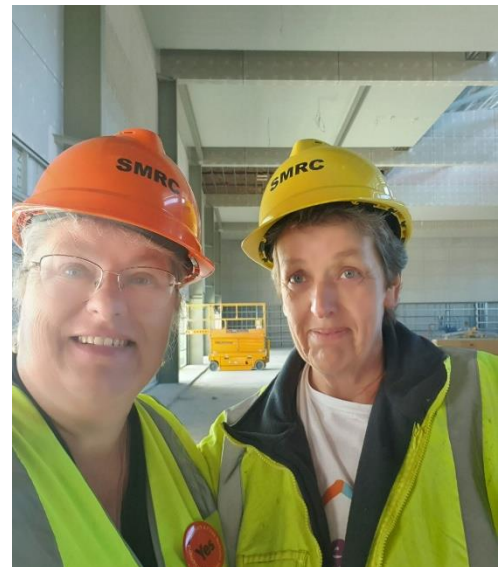
Report from Deputy Mayor Cr Tanya Higgins

R: Crs Tanya Higgins and Lynda Summers inspecting the new Regional Sports Hub in Cooma.

Hi Michelago

Here are some of the issues I have been working on this month:

- **Progressing the SMRC Land and Environment Plan (LEP).** This is a controversial, divisive and very necessary piece of planning legislation. Work on it had been languishing due to the lack of Council planners and funding to undertake more consultation.



I put up a Notice of Motion with a view to accepting the Settlement and Rural Land Use strategies, and building in more mechanisms for community engagement as we work towards the LEP.

Despite the lack of new LEP restricting building and investment in the region, Councillors were lobbied hard not to accept the strategies. I was heavily criticized for even raising it, and many tried to intimidate me into withdrawing the motion.

It did exactly what was intended – most Councillors were able to respectfully listen to my argument and discuss the issues. As a result, my original NOM was lost, but a new motion was accepted which directs Council to undertake an intensive consultation and bring new drafts back to Council in about 7 months' time. Council will need to use consultants to be able to do this, and quotes will be provided to Councillors to approve at a Council meeting. At least it's progress.

- **Michelago Bridge.** There has been some confusion around the construction approvals required to install the bridge, despite having UGL and TfNSW approval to use the small parcel of railway land.

It is now back with UGL and TfNSW but my patience and that of the community have worn out. I have been assured this will be an 'expedited' process. I have commenced discussions with Steve Whan MP.

(This is the official statement provided by Council about the Micalago Creek Bridge:

'The bridge on Ryrie St has moved forward. UGL is finalising the paperwork to get signoff from TfNSW that will allow permission for the Council to commence construction. While we don't have a date, Council staff are putting in place arrangements to allow work to commence as soon as they can after gaining the approval.'

- **Renaming the Michelago Cricket Oval.** I put up a Notice of Motion at Council to rename the Michelago Cricket Oval after the late Clive Kelly, Michelago's most renowned cricketer. This was passed unanimously, so Council will conduct a short consultation period and undertake its usual due diligence processes.

I love a good link to history and being able to celebrate our community's successes.

- **There is a new CEO.** Council has selected a new CEO, David Hogan, to replace Peter Bascomb in November.

I look forward to working with the new Mayor, Chris Hanna, in the position of Deputy Mayor, as I continue to represent and assist the community as best I can.

As always, I can be contacted if you have any questions or concerns on 0420 970 544 or at tanya.higgins@snowymonaro.nsw.gov.au



L: At Bredbo RFS Long Service Medal ceremony were Councillors Chris Hanna, Tanya Higgins and Narelle Davis, with Bredbo Fire Brigade's Senior Deputy Captain Ken Bowerman, Susie Michaels (Manager of Community Risk, South Eastern Area Command) and RFS District Manager Jim Darrant.



PO Box 714
COOMA NSW 2630 Phone 1300 345 345 Fax (02) 6456 3337 www.snowymonaro.nsw.gov.au



Community Day out



This will be a community event. Belinda Hayes, the new owner of the shop, said 'It's to showcase and celebrate growers and makers from Michelago and surrounds and to provide an opportunity for the community to mingle and come together. There is no fee for stall holders — the bonus for the store is simply exposure and as it will be 6 months of owning it, come the day, it is a little celebration for us as well.

Stallholders are responsible for setting up their own tables, displays etc. Given the limited space indoors at the store, the market stalls will be held in the car park space out the front. Public parking will be at the hall and I will arrange signage for the street to point people in this direction.'

In case of wet weather, Belinda plans to use the railway station and hall as well as the shop.

She hopes that Bredbo's same-day car show will bring more people to the area.

She adds 'Any questions, concerns, ideas, please let me know. If you know of any other growers, makers and creators who would like a stall, please let me know. The more the merrier!'



Choir

Magpie19 had the wrong information about the Community Choir's Spring startup after the cold-weather break: 7 September. It should have been 14 September.

Choir continues weekly, so the next is Thursday, 5 October. Place and time: St Thomas Church, Ryrie Street, 7—8pm.

Creative Commons image.





Michelago Volunteer Rural Fire Brigade

Gregg McFaul, Training Officer

Michelago RFS has had a busy month with callouts on the 2, 4, 8, 9, 14, 16 (at Numerella), 20-22 (at Anembo), and 28-  29 of September.

Michelago has very much appreciated the assistance from Smiths Rd, Colinton, Bredbo, Cooma, Anembo, Kreewah, Berridale, and Numerella (and apologies if there was anyone missed). Many thanks to all.



There is no (Sunday) Michelago Brigade training in October, due to the high workload and the planned Monaro District RFS Exercise. However, the RFS shed will be open on Wednesday, 18 October, 6—8 pm for anyone wanting to reconnect or refresh skills ahead of summer. If you are interested in joining the RFS, feel free to drop in and have a chat.

The RFS will be at Belinda's 'Community Day' at the Michelago General Store Sat 21 Oct. We look forward to having a chat and answering any questions the community has. See you there.

Remember: The statutory Bush Fire Danger Period runs from 1 October to 31 March. If you are planning to light a fire in the open during this time, you will need a Fire Permit.



Michelago Memorial Hall

Hall hire

Here is the revised Schedule of Fees for the hire of the Michelago Memorial Hall for the financial year 2023-2024.

- a) A flat fee per hour: \$17.00
Refundable Deposit Bond: \$170.00
- b) Private Evening / Party Function: \$240.00
Refundable Deposit Bond: \$250.00
- c) Requests for hire of equipment, such as tables, chairs, kitchen etc, to be arranged on a case-by-case basis with the Committee.

Bookings: 0493 638 878 or memorial.hall@michelagoregion.org.au

Hall Committee AGM, 16 August – election results

President – Naomi Walton

Secretary – Jenny Wholohan

Treasurer – Belinda Sierzchula

Bookings Officer – Cath Cotter

Facilities Manager – Allan Lehepuu

Committee members – Anna Lucas, Rachel Harling, Leanne Pattison (MRCA representative).

Committee business

- a) Acoustic curtains for the windows have been ordered and will be hung by volunteers.
- b) Council will pay for the replacement of rotten guttering and fascia boards.
- c) The Boco Rock grant application was successful and will pay for the dishwasher installation.

Council is building a wheelchair-accessible ramp at the kitchen door and both rear stairs are being replaced. This initiative is part of the Strengthening Communities Safer Places Project.



POP - UP SHOP



EARTH CONSCIOUS FIBRES -
HANDMADE - TOOLS - KITS

FRIDAY — SUNDAY
OCT 27 — OCT 29

10:00 AM
TO 3:00 PM

MICHELAGO RAILWAY STATION

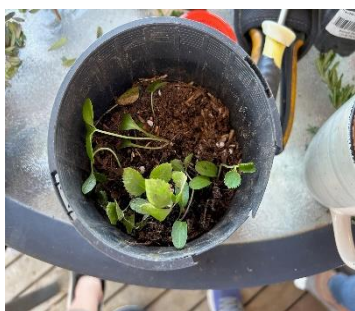


THIS LUSH CORNER
www.thislushcorner.com



Seed Savers

Sunday, 17 Sept. On a quiet, sunny Spring afternoon, with a clear view of the Tinderries, six people shared and planted seeds and seedlings in a variety of pots and trays and discussed the variables and management of weather, soil, rabbits, goats, fences and finding time to do everything.



Clockwise from left: hellebore seedlings; a daphne cutting dipped in honey (2 weeks later, it's taken root); the busy table; trays and pots seeded with enough vegetables to feed several families, with some spare for the rabbits.
Next meeting: 22 Oct, 2—4pm, 6141 Monaro Hwy, just south of the Pony Club sign.



Serrated tussock

SMRC's Communications Officer, Clancy Noakes, recently resumed Council's informative '**Weed of the Week**' series, to go from September to February, with a focus on this old enemy.

Below is a selection of points from the media release of 20/9.

Serrated tussock is a perennial, drought resistant, tussock forming grass with a deep root system. Serrated tussock is a **problem weed** because it is extremely low in feed value and almost entirely indigestible to animals. This allows it to dominate native and introduced pastures where other grasses are preferentially grazed.

Serrated tussock plants **seed prolifically**, usually during late October and November. During this time they are most easily distinguished by their drooping, purple seedheads, which typically detach and disperse by Christmas time.

Seeds are **easily dispersed** by wind, water, animals, vehicles and fodder, which gives serrated tussock the ability to populate new and remote areas easily.

Due to its **invasive impact** on both agriculture and the environment, serrated tussock should be strategically targeted by public and private land managers to limit seeding and minimise spread.

Council is here to help. If you have questions about serrated tussock or any other weeds on your property, contact our specialist biosecurity officers for advice and assistance. Call 1300 345 345 or email council@snowymonaro.nsw.gov.au

For more information about weeds and biosecurity in the Snowy Monaro, visit our website: www.snowymonaro.nsw.gov.au/Environment-Waste-and-Weeds

Tips for managing Serrated Tussock:

The number one rule: maintain strong, competitive pastures to prevent establishment of serrated tussock establishment. Disturbed ground = weeds.

- Plan to control all serrated tussock before it produces seeds. One year of seeding means many years of weeding.
- Decide what control methods are most appropriate to your situation:
 - Manual removal or spot spraying is most effective for managing isolated or light infestations and minimises ground disturbance
 - Boom spraying and long-term pasture renovation strategies are most effective at managing heavy infestations on arable land (giving consideration to the legal restrictions on clearing native vegetation and native grasslands)
- Non-chemical options include digging or chipping out the plants. You can scatter grass seed over larger bare areas to help stop weeds from growing.
- Consider whether you have the time, equipment and ability to do the work yourself. It might be more practical and efficient to engage a contractor to do the work on your behalf.
- Coordinate your weed control efforts with your neighbours. You may be able to share resources and achieve more effective results.
- Flupropanate and glyphosate are most commonly used for controlling grassy weeds like Serrated Tussock.

- From September onwards, a mixture of Flupropanate and Glyphosate will prevent seed set. Refer to Australian Pesticides and Veterinary Medicines Authority permit 9792.
- Use glyphosate on actively growing plants only. Glyphosate is absorbed through the leaves of plants and acts very quickly but is not selective and will kill most plants on contact.
- Flupropanate is a more selective, longer-acting herbicide that is absorbed mostly through the roots of plants. Flupropanate can take several months to kill grassy weeds and will remain active in the soil until about 100mL of leaching rain has moved it out of the plant's root zone.
- Ensure that you rotate herbicides regularly to reduce resistance issues. Consider using flupropanate through the winter months, mopping up remaining plants with glyphosate in the warmer months when plants are actively growing.
- After a long break in the supply of flupropanate, it is slowly but surely returning to local shelves. Flupropanate is a valuable tool that should be used carefully and integrated with other control techniques.

As with all weeds, prevention is the best control option. Maintaining a vigorous perennial ground cover at all times will inhibit the establishment of serrated tussock.



Image credit: Victorian Serrated Tussock Working Party

Fine serrations can be felt when the leaves of serrated tussock are run between the fingers from tip to base.

Source: DEPI Victoria



Does your piano need tuning?



Some players have had trouble finding a piano tuner in our area.

Recently a tuner, Mark Bonja, visited from Sydney and did an excellent job for a *Magpie* reader.



He could arrange a group booking for the same day to cover his travel. Find out more at www.bonjapianos.com.au



Yoga change of date

Yoga teacher Belinda has changed the weekly date to **Thursdays, 6.30pm** at the Hall. It's fine to just turn up, though bookings are preferred just in case the class is cancelled for any reason.

Private sessions are available if you're not sure about coming to a class or if you have something specific you'd like to work on.

Cost \$20. Please BYO mat, cushion and blanket.





Hogging Hollows with a HollowHog

This is a précis of the report from Markus Buchhorn, President, Michelago Region Landcare, about the 16 September workshop. About 30 people attended. Photos: various members of Upper Murrumbidgee Landcare.

Over 300 species of native animals (birds, mammals, reptiles, frogs and insects) live and breed in tree hollows, but a good hollow can be hard to find. Why? First, a small-bird-sized hollow can take 50 years to form, and larger ones 100—200 years, even with enthusiastic parrots working hard to extend them in hard trees.

Second, due to bushfires, storms, pests and clearing, there are less and less 200+ year-old trees. This significantly impacts many species up and down the food chain.

How can we help? Nest boxes work well for some species, but they are less thermally stable than hollows and have a limited lifespan with most materials. For nestbox developments, see Alice McGlashan's website and Facebook group *NestBoxTales*.



The *HollowHog* system, invented by Matt Stephens, ecologist, can speed up nature. The powerful HollowHog drill can also drill sideways, and makes a large hollow in about an hour.

The system works in both living and dead trees. It includes an entry modifier, a wooden plate attached to the tree to narrow the entry for smaller species and prevent larger species from raiding the nest. The tree's cambium will grow over the edge of the plate and lock it in place within a year or two. A single tree can hold multiple hollows, of different shapes and sizes.

This also works with log cut-offs to make hollows for ground-dwelling species.



Matt Stone, contractor and arborist, showed HollowHog work on a local property, explaining options for making hollows of various shapes and sizes and even tunnels a few metres long.



To help restore native populations, our Landcare groups would like to acquire a unit and be trained in its use. Parrots – 100 years; HollowHog – one hour.

Above photos: Matt Stephens with HH machine; Matt Stephens with entry modifiers; close-up of an entry modifier.



Fish Seminar apology



Photo: Andy McGovern ©

The first part of the recent (5 August) very popular presentation about Murrumbidgee fish and fishing was wrongly attributed to Mick Bettanin. In fact, Mark Linterman was the expert who spoke about the different types of fish in the Murrumbidgee

The *Magpie* was present for and reported on the second and third parts – see *Magpie19*. Several attempts to source information for readers about the first part of the seminar have been unsuccessful.

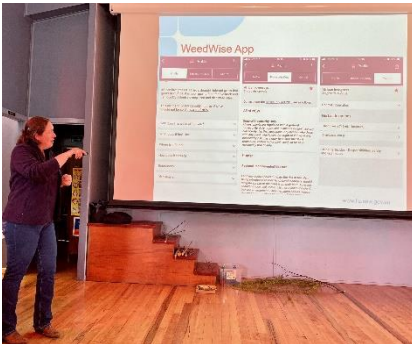
The *Magpie* apologises to Mark Linterman.



Weed Whacking workshop

Report and photos: Di Fett

Saturday, 9 September. Local Landcare heroes Georgeanna Storey (Upper Murrumbidgee Landcare), Antia Brademan (Upper Murrumbidgee Demonstration Reach), Jo Powells and Leon Miners (Local Land Services), as well as the knowledgeable Brett Jones (Snowy Monaro Regional Council), provided an excellent 'weed whacking' day at the Michelago Hall. It was great to have these experts share tips and tricks on Integrated Weed Management and to have the opportunity to ask them questions.



Council's approach to weed control has certainly shifted from the old enforcement notices. Instead, Council weed officers are working with LLS, Landcare organisations and landholders, using an interactive, responsive and truly helpful approach.



The focus is on preventing the spread of emerging invasive species such as hawkweed, broomrape and Mexican feather grass (we were shown a small patch of the latter near our oval, which is being monitored). Brett encouraged people to contact him if they have any weed concerns and/or would like a visit to help identify species.

In the afternoon we were treated to a demonstration of various tree-weed extermination techniques.



If you see any of these events coming to Michelago, jump in and take advantage of the wisdom (and some cool toys) generously shared!





Michelago Poets

Next meeting: 8 October, 3pm, has the theme 'Make somebody laugh', so bring along a poem to share that made you smile, smirk, chuckle or even laugh hysterically. It could be a limerick, a haiku, a rollicking ballad or a totally free verse. It could be an original or a parody. It could be yours or anybody's. Come along!



Railway Station sensor lights



Tired of night-time hazards after meetings and mindful of other community security issues, the MRCA bought three solar-battery sensor lights for the railway station. They were \$69.99 each from Costco.

Installation was approved by NSW Heritage.

Local identity and all-round handyperson Roscoe Cowling installed them and *refused payment*! Thank you, Roscoe 😊



Big grant for railway station – UGL comes to the party

UGL Regional Linx, which manages the country rail network for the NSW Government, has generously fulfilled the condition of the NSW 'Caring for State Heritage' grant of \$17,000.00 by matching the amount.

This will pay for some very significant repairs and the huge internal painting job, to be carried out by Roscoe Cowling and Ardeshir Ghoulipour respectively. Work will start around mid-December.

The MRCA is very grateful for this significant help to maintain our heritage-listed station.



Riparian woody weeds – treatment project on Michelago Creek

Upper Murrumbidgee Landcare has obtained funding to poison infestations of blackberry, box elder and crack willow along some of the Michelago Creek. Treatment is planned for mid-October.



See *Magpie19* p6 and *Magpie18* p12 for background to the project. All *Magpies* are accessible on the MRCA website: www.michelagoregion.org.au

Landowners whose properties extend to the targetted area of the creek or are within c.200 metres of it have been letterboxed with the consent form and an explanatory letter. They have been asked to leave the completed forms at the Michelago General Store.

Landowners who have not responded or who have questions about the treatment have been contacted by Georgeanna of UML.

Please contact Georgeanna Storey for further information: upper.murrumbidgee@gmail.com



The Michelago Clive Kelly Oval?

The proposal to name the Michelago Sportsground after legendary Michelago cricketer Clive Kelly, whose uncle James donated the land, was discussed at an MRCA meeting in October last year. The Committee supported the idea.

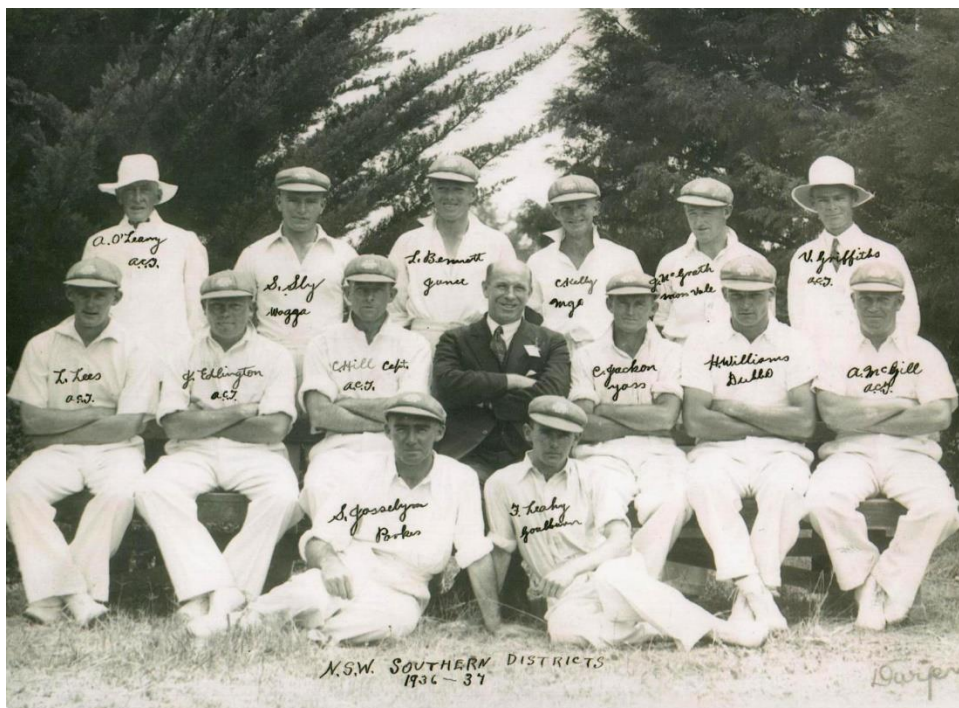
On 21 September, Deputy Mayor Cr Higgins moved: 'That Council undertake the appropriate processes, including community consultation with the Michelago community, to rename the Michelago cricket oval the Clive Kelly Oval, in recognition of his contribution to cricket in Michelago and the Southern Districts of NSW.' See also Councillor's report p3.

The SMRC has now unanimously approved the motion of Cr Tanya Higgins.


A feature article on Clive Kelly is in *Magpie12*. Find it at www.michelagoregion.org.au

Dave Hans, Michelago Cricket Club Captain, has said that when Clive hit a six, it went from the pitch to beyond the railway station.

Clive is the third from the right in the back row below. *Photo courtesy of Kerry Rooney.*



Wayne's walls, paths ... and anything with bricks and rocks



SOLID AF BRICKLAYING

New Homes	Extensions	Brick Walls
Block Walls	Letterboxes	Rock Walls
0456 949 771		fb: solidafbricklaying



Michelago Alpaca Farm and Mill Tour, 29 October (rescheduled from 24/9)

This fascinating tour will take us all the way from paddock to 'purl' as attendees visit the gorgeous alpacas at Pacawoolly and then visit Boston Fine Fibres to learn about their specialty fibre processing mill.

10am—4.30pm, lunch and afternoon tea will be provided. Book tickets for this fuzzy feel-good tour: <https://southernharvest.org.au/.../michelago-alpaca.../>

Pacawoolly is a small alpaca stud in Michelago. We breed high quality alpacas in a variety of colours and produce natural alpaca fleece and yarn. We use sustainable, natural and economically viable products and processes in the care of alpacas, the land and fleeces.



We choose low micron, high comfort factor fleeces to mill into our yarns, ensuring a soft and comfortable product. We do not dye the yarns. Our yarn is soft to the touch, a joy to knit or crochet and comfortable to wear.



We sell alpacas as guard animals or pets and small groups of animals if you are interested in setting up a stud of your own.

We sell our yarn and garments made from our yarns. We also knit to order so if you would like a particular item knitted in our yarn please [get in touch](#).

Pacawoolly is a member of the Australian Alpaca Association.

JENNY'S REPAIRS & ALTERATIONS SERVICE



**** very reasonable rates ****



Anything from sewing on buttons, altering hems, resizing, repurposing, to adjusting a formal garment. Also mending, patching or altering such household items as curtains, bedding linen, cushion covers, etc.

You may not need to throw out that favourite piece you love to wear, or maybe there's something you've just bought that doesn't really fit.

Save yourself \$\$ by keeping items useful for longer and help to minimise waste

Contact Jenny: Ph. 0400 484 485 Email: jenny258@bigpond.com



Connecting Rural Families

30/15 Unlimited

\$80 per month

New!!

Up to 50Mbps

\$ 99 per month

New!!

Up to 100Mbps

\$129 per month



Locally Based Helpdesk



Rural Internet Solutions

www.yless4u.com.au

(02) 62303699

Internet Packages to suit all needs!

Plans starting from

\$ 35 per month



Living with lovegrass event: 7 October 10.30—2, Michelago Hall

Georgeanna says there'll be a paddock walk after lunch, so please wear suitable clothing.

Local Land Services



- The plant and why it's such a challenge to manage
- Management requirements for lovegrass on the Monaro
- The feed value of lovegrass for livestock
- The effectiveness of management options such as burning, slashing, fertilising and grazing management
- Herbicide control options.

RSVP:

Georgeanna Story (UMLC): 0429 779 928,
upper.murrumbidgee@gmail.com

Jo Powells (LLS) 0429 785 986,
jo.powells@lls.nsw.gov.au



or scan the QR code to register



SNOWY MONARO
REGIONAL COUNCIL





Magpie information

Get the Magpie by email: send name and email address to newsletter@michelagoregion.org.au
Previous issues are available on www.michelagoregion.org.au

Copyright: all *Magpie* articles and photos are © of the authors and photographers. That means they may not be reproduced for public dissemination (eg Facebook) without permission of the authors/photographers. If so reproduced, items must be attributed. To copy photographs of private individuals, unless they are crowd shots, you must have the permission of those portrayed or, in the case of children, written permission of their parents/guardians. Such individuals have given their consent to publication of photographs only to the *Magpie*.

Advertisements: businesses can purchase advertisement space for \$30.00 for three issues (it might end up being a half-page or a full one, depending on space). Non-business ads are free.

Contributions: photos (jpg, please) and news items are welcome. Please send them to Lpatt@internode.on.net Please give your name and put *Magpie* in the subject line. Published items will be attributed.

If you have events or activities planned and would like them listed in the *Magpie* calendar, please email them to Lpatt@internode.on.net

The MRCA committee reserves the right to edit contributions for length and clarity.

Aims: to publicise community events and activities and promote community identity. Yes, the Facebook pages do that, but the *Magpie* tries to give a more cohesive, detailed picture.

Photos and articles, unless otherwise accredited, are by Leanne Pattison, Magpie Editor.



MRCA information

To belong to the MRCA, first download the membership form at www.michelagoregion.org.au It's only \$10 p/a single and \$15 p/a family. To renew, see the same for bank details, and please include your name.

There are **four good reasons** for joining the Michelago Region Community Association:

1. The more representative we are, the more we can achieve for our village and region.
2. You get updates from Council.
3. All funds go to running costs, including upkeep, rental and insurance for Michelago's heritage-listed Railway Station. The Committee applies for government grants and occasionally organises other fund-raisers, depending on available personnel.
4. It's sociable – you know what's happening, who's doing what, and you participate only if you want to.

The MRCA Committee <http://www.michelagoregion.org.au/mrca/>

Meetings are open: 2nd Tues of the month, 6 pm, Railway Station. All Michelagoans are welcome.
The minutes are on the website: www.michelagoregion.org.au



~ Michelago Magpie Calendar ~

Please send quick updates of what's coming up, what's on and any corrections to newsletter@michelagoregion.org.au If the *Magpie* knows about it, it will be here.

If your friends want to be on the mailing list for the *Magpie* and its calendar, send names and emails to the above address.

Previous issues of the *Magpie* are on www.michelagoregion.org.au

Regular (Venues, contacts and times can change; information is here as received.)

- **Choir** recommenced 7 September. See p4.
- **Fire Brigade** training second Sunday of the month, 9am–1pm. Contact details: MRCA notice board at the Michelago General Store. NO TRAINING SESSION IN OCTOBER. See p5.
- **Hall Committee** general meeting. Hall. Monthly 3rd Wed 6pm.
- **Hall bookings:** memorial.hall@michelagoregion.org.au or phone new number 0493 638 878. Current hire rates: see p5.
- **HIIT** (high intensity interval training) exercise class with Peter (0417 427 494). Hall. Sat 8am. \$10. 'Works for all ages.'
- **Library.** Mobile library 9.45—11.30, Mondays, outside the school. See below. (See *Magpie13* for complete library schedule. It's also on the Shop Noticeboard).
- **MRCA** general meeting (open). Railway station. Monthly 2nd Tues 6pm.
- **Pony Club.** Monthly 2nd Sunday. Enquiries: Rhys (0401 778 004) or Alisha (0422 623 304) or email michelagoponyclub.secretary@gmail.com Also see <https://ponyclubaustralia.com.au/>
- **Pre-School.** Hall. Teacher: Debbie is on leave. A new teacher hasn't been appointed yet. It has been weekly, Mondays 6am–6pm. *Magpie* awaits information about resumption.
- **Seed Savers.** Usually 3rd Sunday of the month. See below for October date. To check dates and locations or if you have other questions, please SMS or email Belinda: 0411 043 027 or hello@michelagoyoga.com.au
- **Senior Lunch Group.** 1st Monday of the month, 1pm, the Shop.
- **St Patrick's** Catholic Church. Mass monthly, usu. 2nd Sat, 5.30pm. Updates on Facebook's Michelago Noticeboard.
- **St Thomas's** Anglican Church. Holy Communion. Monthly, 3rd Sunday 11am.
- **Trail Riders:** usu. monthly, 1st Sat. Check details on Tinderry tab of Australian Trail Horse Riders Association (ATHRA). *Magpie 4* has a feature write-up. President Don Munns 0407 235 407. Membership – Secretary Heidi Dreyer 0434 197 122.
- **Yoga:** Thursdays, 6.30 pm, Michelago Hall. \$20. Enquiries: Belinda 0411 043 027. For all bodies.

One-offs (that we know about) (Venues and times can change; information is here as received.)

October

- **Landcare.** 7 Oct 10.30—2. Hall. Living with lovegrass. Details p.15.
- **Mobile Library.** Monday 9 and 23, 9.45-11am.
- **Poets:** Sunday 8 Oct, 3pm, Station. Theme: 'Make somebody laugh'.
- **Seed Savers.** Sunday 22 October, 2-4pm. Seed planting & propagating cuttings for Spring. You can bring seeds, cuttings. Potting mix, rooting hormone, pots supplied. Donations, please. All welcome to plant and leave things in Belinda's greenhouse until warmer weather. SMS Belinda for more info 0411 043 027.
- **Community Day Out, including RFS 'Get Ready' Day** at the Michelago General Store. See p. 4.
- **Pop-up Shop** for *This Lush Corner* Fri 27—Sun 29, 10am-3pm. Station. Details p6.

December **Gingerbread Houses** creative family fun as last year (see *Magpie11*). Hall fundraiser. Details re date and orders for the kits available asap.

