

# ~ Michelago Magpie 17 ~

The Michelago Region Newsletter  
from your Michelago Region Community Association  
3 July 2023

All issues on [www.michelagoregion.org.au](http://www.michelagoregion.org.au)  
Order email issues / enquiries: [newsletter@michelagoregion.org.au](mailto:newsletter@michelagoregion.org.au)



Print copy \$2. Free by email

**In this issue:** the Clickathon (Essential Energy's Community Choices program)1-2; Women's Art workshop in NAIDOC week 2; Hall report 3; Noticeboard at the shop 3; Please join 3; Choir 4; Successful grant applications 4; Bricklayer 4; SMRC drop-in session 5; UGL inspects the station 5-6; Fire Brigade AGM 6; Landcare 6; *The Whipper Snipper* 7-8; Poets 8; Fire Brigade news 9; RLU discussion 9; Magpie & MRCA info 10; Council Corner 11-12; Jenny's repairs & alterations 12; Painter 12; Yless4U 13; Magpie Calendar 14.

**The 2023 Clickathon to win \$\$\$\$ for the Michelago Railway Station! Please join in.**



It's on again! Essential Energy's Community Choices click marathon.

How does Michelago win? Well, it all depends upon all of us. That's you, too, please!

**You can vote from Monday 3 July to Monday 17 July 5pm**

**1. Google Essential Energy Community Choices Program**

**2. Scroll down to Voting for Community Choices 2023**

**Write Michelago in the Search box and click Search**

**Click on Vote under the photo of the railway station. One click = one vote. (More info next page.)**



**OR** click on this link, scroll down, write Michelago in the box, click Search and click on Vote:  
[www.essentialenergy.com.au/about-us/community-support/community-choices](http://www.essentialenergy.com.au/about-us/community-support/community-choices)

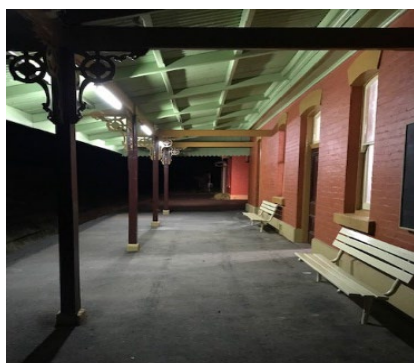
Please do this as often as you can. You can vote once every hour! You could set your alarm for it.

Maybe you could rope in family, friends and distant relatives to join the clicking frenzy.

Last year, we came second to Nimmitabel Primary School. We won \$2,000 that funded a new pump and the electricity bills. The prizes are bigger this year: 1<sup>st</sup> \$5,000, 2<sup>nd</sup> \$3,500, and 3<sup>rd</sup> \$2,750.

The railway station's costs are over \$2,000 a year just to pay the rent, insurance and the electricity that's going up this year. On top of that will be maintenance and repairs.

Without grants and donations we couldn't keep the railway station accessible for the Michelago community. So, please join in the clickathon.



There are five winners in each zone. There are 20 zones in NSW. Our zone covers the electorate of Monaro.

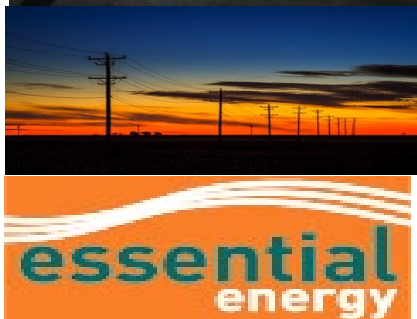
All sorts of community groups (scout halls, animal rescue, dragon boat racers, etc) compete. Most are from towns with larger populations than the Michelago region has.

We showed last year that, though we're small, we can out-click the big ones. Out of 317 applicants from *all* of NSW, Michelago finished in 10<sup>th</sup> position.

You can click on your desktop, your tablet or your phone (like Amelie, above).

The MRCA is very grateful to the generous folk who put cash in the station's donation box at the shop. Every donation really does help.

*L: Essential Energy's poles and wires keep us going. Let's keep our Michelago Railway Station going.*



## Women's Art Workshop at the Railway Station in NAIDOC week

Artwork by Gail Neuss

**Michelago Women's Art Workshop NAIDOC Week**

Celebrated Aboriginal Artist Gail Neuss will hold a special women's circle inviting local women to paint, hear her story, and share their own stories. Gail will also share some bush tucker during this women's only event for NAIDOC Week.

**When:** Friday 7 July 2023  
**Time:** 11am to 2pm  
**Where:** Michelago Railway Station  
**Cost:** FREE  
**RSVP:** Essential as spaces are limited, please register by  
**P** 0409 220 842  
**E** annelouisepollard@gmail.com

24/7 Customer service line  
**1300 345 345**

PO Box 714 COOMA NSW 2630  
E council@snowymonaro.nsw.gov.au  
W www.snowymonaro.nsw.gov.au

Thanks to Anne-Louise Pollard (aka Pud), for liaising with Council to make this free workshop happen.

Bookings are essential: ring Pud on 0409 220 842 to reserve your place (not the Council number on the bottom of the poster).

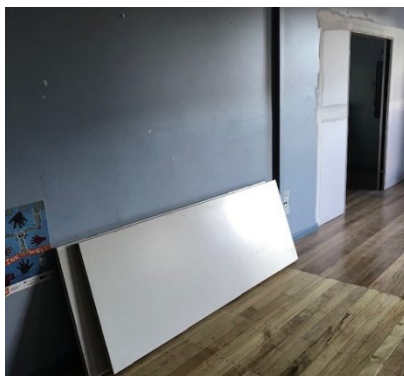
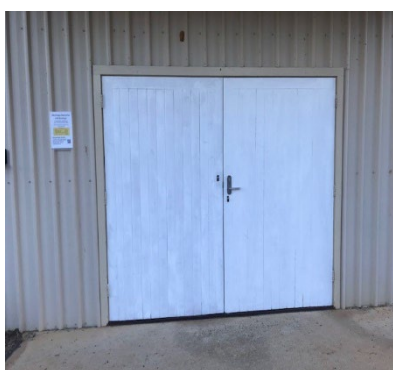
There'll be a fire at the railway station to keep the artists warm.

This poster is also on the MRCA notice board outside the shop.



## Michelago Memorial Hall

1. The SMRC has made progress on their region-wide costings for work on some regional halls. A tender for works has been awarded and measurements done by tradespeople. The Committee awaits a full list of work to be done and a commencement date from SMRC.
2. Unfortunately (again) SMRC has decided that these works might not include a new stove and oven. (Attendees at the MRCA dinner will recall the 'technical glitch' that was solved by people dashing off to bring in their portable heating devices!) The Committee will look for other funding options, probably Boco Rock.
3. We've been granted funding for the dishwasher but, unfortunately, not for its installation (see below – Successful Grant Applications).
4. An EOI has been lodged for Hall acoustic curtains via the Stronger Communities grant.
5. The sound and lights system: Allan has obtained instruction booklets for a number of items. He'll incorporate these in a folder for Hall users, including how to turn off the system when they vacate the Hall.
6. Solar panels: SMRC has approved these now we have assurances from the supplier that the building is suitable.
7. There's still no information about the mobile pre-school re-commencing.
8. Hall storage area sliding doors: the original contractor has not responded to pleas to finish the job. Tony Finch, a local plasterer, has helped out with the ongoing work. Allan Lehepuu is organising the hardware to hang the doors.
9. The eastern retaining wall has moved so the gate will not shut. Allan will investigate options but SMRC might have to attend to safety implications if/when the pre-school returns.
10. The Committee agreed hire rates for Hall furniture when taken off-site: \$2 per black chair, \$5 per table, and \$100 refundable bond.



*Above, L-R: Undercoat painting on the front doors by Cooma Correctional Centre workers. They've also done internal doors. Painting will be completed in warmer weather; storage area doors awaiting hanging; updated info on booking.*



## Noticeboard at the shop

Please feel free to sticky-tape your temporary advertisements to the left-hand side of the notice board. This is a community notice board – please use it!

The MRCA aims to have more permanent notices, like for businesses, approximately on the right-hand side. If this works, it's good for all. Feedback welcomed: [newsletter@michelagoregion.org.au](mailto:newsletter@michelagoregion.org.au)

**Help the MRCA's community work** by joining this incorporated association. Only \$10 single and \$15 family p/a. Download the membership form on [www.michelagoregion.org.au](http://www.michelagoregion.org.au) See p10.



## Choir

The Michelago Community Choir is taking a break over winter and will reconvene in September.

The *Magpie* will note this when the date is available. The date should also be on the MRCA notice board at the shop.

The choir would love to have more members, men and women. Come and experience the joy of singing for health, happiness, team satisfaction and community enrichment.

*Below L: The choir contributed substantially to the significance of ANZAC Day last April.*

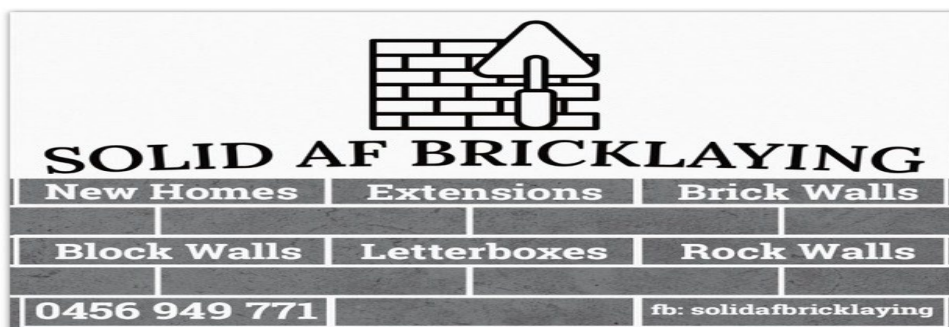
*Below R: The choir celebrated Christmas last year with carols at the Michelago Railway Station.*



## Successful grant applications

An SMRC media release announced (23 June) the successful grant applications in the Donations & Sponsorship 2023 round. Michelago had three.

1. The Michelago Memorial Hall – \$1500 for a dishwasher and its installation. This is good news for the dishwashing-marathon helpers at the BCRRF-funded community dinner in March. Unfortunately, this amount is not enough for both the machine and its installation, so the Hall Committee has decided to buy the dishwasher, anyway, and apply for other funding for the cabinet and electrical work to install it.
2. Michelago Pony Club – \$1,100 to partly fund the annual Michelago Pony Club Second Chance Sporting Gymkhana.
3. Michelago Region Community Association – \$1,500 to cover the cost of the Michelago Railway Station licence with Transport NSW, various running costs and installation of solar lights.  
Note: the MRCA is constantly trying to future-proof finances for our Railway Station. This grant will pay mandatory expenses for half a year.





## SMRC community meeting/drop-in session at the Hall

**3 June.** The intense interest of the few attendees in Council's financial and other planning strategies fully engaged the Council employees and Councillor Tanya Higgins who'd given their Saturday time to organise materials, answer questions and discuss issues.

Afterwards, MRCA President Di took two visitors to look over the Michelago Railway Station and to pause at the beautifully upgraded cenotaph.



## UGL inspects the Michelago Railway Station *Report & photos: Kerry Rooney*

Terry Donald from the Transport division of UGL Regional Linx and Nishant Siyani from TESSG carried out an inspection of the Michelago Railway Station bright and early on 28 June. Terry, who hails from Orange, thought it a mild winter's morning, whereas Nishant, Sydney-based, was really feeling the cold.

Nishant is a building compliance auditor and the purpose of the inspection was to assess the fire safety of the railway station buildings and check on the availability of fire assets, eg fire extinguishers.

This was Terry's first opportunity to inspect the interiors of the buildings. He took lots of photos of defects, like small gaps in roofing, internal damage to walls from previous rain events, the fire place in the lamp room which has no mantelpiece, the broken segment of a skirting board and the slightly bowed ceiling in the main room.

Terry suggested resurfacing the tarmac outside the kitchen door to encourage water to run into the garden rather than into the kitchen. In addition, he suggested getting an electrician to test the safety of our electricity fuse box once a year.



Following their inspection of Michelago, Terry and Nishant (*at left*) were heading south to visit Nimmitabel and Bombala. The Nimmitabel railway station is leased by the local men's shed. The Bombala Railway Station is leased by the Snowy Monaro Regional Council.

This arrangement by the current Council is a legacy of the former Bombala Shire Council and apparently is justified on the basis that a visitors' centre is situated on the grounds of the railway station complex.

Nimmitabel is a timber railway station built in 1912 and Bombala, built of pre-cast concrete, would have been built around the same time.



*Nimmitabel Railway Station and Bombala Railway Station [image attributions unknown]*



## Michelago Rural Fire Brigade AGM 21 May: elections for 2023—2024

### Administration

President – Brent Wallis  
Vice President – Stuart Peterson  
Treasurer – Brien Hallett  
Secretary – Lee Harris

### Field Officers

Captain – Keith Howker  
Senior Deputy Captain – Abby McPherson  
Deputy Captains – Derek Giucci, Lee Harris, Duncan McNeill, Peter Butler  
Training Officer – Gregg McFaul.



## Landcare Workshop, Michelago Memorial Hall, Saturday 5 August (times tbc)

River health and wildlife, sustainable fishing, especially Murray Cod. Dealing with pests, eg Redfin, Carp. Speakers from pro-Angler community, LLS, ACT Govt, UMDR, Landcare and others. Support for riparian weed management. [This was late news. More details if the next *Magpie* flies in time. Otherwise, contact Markus: [landcare@michelagoregion.org.au](mailto:landcare@michelagoregion.org.au) ]



## The Whipper Snipper

Shay Rutherford, Tinderry

I woke this morning, full of joy.  
The sun was shining brightly.  
And even though I'm 59,  
I often feel quite sprightly!

*A challenge new was on the cards  
For such a perfect day –  
A job to really test my skills  
And burn some fat away.*

Mine eyes did light upon the box  
That held the whipper snipper.  
I've always liked a garden neat,  
Since I was just a nipper.

*I got a crash course from my man –  
"Just do this and this, then that  
And make sure that you wear your boots."  
And off he went to grab his hat.*

He said "This is a GREAT machine!  
The one that I ran over....  
Was not a scratch on this one –  
It will MAUL the weeds and clover."

*I got my boots and waved goodbye –  
I knew he knew his stuff,  
But did I have what it would take?  
Was my brain big enough?!*

I got me bit of paper out –  
I'd written every bit  
To do it all in order – and I did  
But then, oh holy shit!

*There seemed to be a few things  
The instructor didn't say!  
I started up the motor  
And the damn thing got away!*

My husband dear, he failed to tell me  
What a beast I had awoken!  
In no time flat, it grabbed the fence  
And TWANG the cord was broken!

*I had to be an octopus  
To put a new one on!  
I wound it round the way I'd seen,  
Then BOING, that too was gone!*

I tried again and jammed it down,  
My patience sorely tested.  
I pulled the start – it went so mad,  
I could have been arrested!



*It dug a HOLE down in the ground  
Where once a plant was thriving,  
Then grabbed another, spun it round –  
No way was IT surviving!*

Somewhere amidst the mayhem,

The dog and sheep took fright.

The ducks and geese took cover –

They knew something wasn't right!

*It seemed that there were MANY things*

*My husband didn't mention.....*

*And as I wrestled with the beast,*

*They sure took my attention!*

Like CLOSE YOUR MOUTH!

Or you will swallow bugs and grass and gravel,

And when you close it, up your NOSE

Those same things surely travel!

*You'll ringbark all your trees*

*And take the heads off all your flowers.*

*You'll be thrown about and dragged along,*

*Despite your many powers.*

You'll collapse exhausted, clutching to

A cup of soothing tea,

The lawn and weeds as large as life

As far as you can see....

*And in your bra and undies,*

*There will be a forest growing!*

*Grass and sticks and plants and seeds*

*In places best not knowing!*

Your face and hands, green-covered,

And your hair like grass spaghetti –

You'll look into the mirror

And swear you've seen a yeti!

*And here's the thing about the boots –*

*They surely saved my life,*

*As Joe Blake shot out of a bush,*

*Full of fear and strife!*

So next time when you wake

Into a day that seems so chipper –

Take my advice

And give your husband BACK that whipper snipper!! [Creative Commons images, except for Tony's hat.]



**Poets** The next meeting will be at the Michelago Railway Station, 9 July, 3pm. No need to write anything, but bring a poem that you like. If you don't want to read it aloud, someone else can do it for you. There's no booking fee for community groups, but please give a gold coin.



## Our busy Fire Brigade

The Michelago Brigade people will be working with Colinton Brigade later this month, holding a lovegrass workshop to keep up their skills controlling fires in this highly flammable weed.



As always, the community is grateful for the protection afforded by the dedication and continual training of our Fire Brigade volunteers. *[Creative Commons image]*



The Brigade's contact details are on the MRCA noticeboard at the shop.



## The Brigade's June training at Cooma

*Report and photo: Training Officer Gregg McFaul*

Michelago and Smiths Road RFS Brigades travelled to Cooma for June training.

The Fire Control Centre (FCC) hosted us for the afternoon. We thought we might get a walk through and an explanation of how the FCC works, but no! They lowered us gently into the deep end and let us manage a mock incident. We not only got to see, but do, the roles of comms, intel, logistics, media liaison, heavy plant management, aviation coordination etc – all that goes on behind the

scenes while the volunteers are out on the fireground.

We had a ball, even if we need lots of guidance from those that do this for a living. It was fascinating to see what happens on the other end of the radio from the fire ground.

Many thanks to the Cooma FCC staff who came in on a Sunday to set up and run training just for us.

The photo is of some of the attendees and the gentle debrief over a cuppa of what we learnt and how we went performing the task of supporting fireground ops from 'the other end of the radio'.



## Rural Land Use Strategy discussion

Wednesday 7 June. Councillor Tanya Higgins chaired a useful session on the Rural Land Use Strategy. The views of people living in the northern end of the council do not agree with some important elements in the strategy, especially the proposed very large minimum lot sizes. Two council staff attended to answer questions. Thanks to Tanya for this opportunity for an exchange of views. (See also p11.)





**Copyright:** all *Magpie* articles and photos are © of the authors and photographers.

That means they may not be reproduced for public dissemination (eg Facebook) without permission of the authors/photographers. If so reproduced, items must be attributed. To copy photographs of private individuals, unless they are crowd shots, you must have the permission of those portrayed or, in the case of children, that of their parents/guardians. Such individuals have given their consent to publication of photographs only to the *Magpie*.

**Advertisements:** businesses can purchase advertisement space for \$30.00 for three issues (it might end up being a half-page or a full one, depending on space). Why per three issues rather than per month? Well, (a) sending an invoice monthly is more of an administrative task for we volunteers, and (b) we can't guarantee a timeframe for issues – issues depend on available content and volunteer time. Non-business ads are free.

**Contributions:** reactions, letters, photos and news items are welcome. Please send them to [newsletter@michelagoregion.org.au](mailto:newsletter@michelagoregion.org.au) Please give your name and put *Magpie* in the subject line. Published items will be attributed.

If you have events or activities planned, please email them to be listed in the calendar and also given article space if there's enough information: [newsletter@michelagoregion.org.au](mailto:newsletter@michelagoregion.org.au)

The MRCA committee reserves the right to edit contributions for length and clarity.

**Aims:** to publicise community events and activities and promote community identity. Yes, the Facebook pages do that, but the *Magpie* tries to give a more cohesive, detailed picture.

*Photos, unless otherwise accredited, are by Leanne Pattison, Magpie Editor.*



## MRCA information

To belong to the MRCA, first download the membership form at [www.michelagoregion.org.au](http://www.michelagoregion.org.au) It's only \$10 p/a single and \$15 p/a family. Peanuts. To renew, see the same for bank details, and please include your name.

There are **four good reasons** for joining the Michelago Region Community Association:

1. The more representative we are, the more we can achieve for our village and region.
2. You get updates from Council.
3. All funds go to running costs, including upkeep, rental and insurance for Michelago's Heritage Railway Station.  
These costs are eating into reserves because of Covid-cancellations of major fundraising events. The Committee is working on other fund-raiser options and really appreciates all the volunteer assistance.
4. It's sociable – you know what's happening, who's doing what, and you participate only if you want to.

The MRCA Committee <http://www.michelagoregion.org.au/mrca/>

**Meetings are open:** 2<sup>nd</sup> Wed of the month, 6 pm, Railway Station. All Michelagoans are welcome.



It has been a busy month, and I thank everyone who has been in touch about various issues, big or small. Things of note include:

- Holding 'kitchen table' type conversations with residents around the local government area regarding the Rural Land Use and Settlements Strategies. This included a fabulous discussion at the Michelago General Store with two of Council's strategic planners. As I travel around the shire I am hearing everyone's support for more ongoing community involvement and strategic decision making. *[See also p9.]*
- Council consultations around Snowy Monaro regarding SMRC's next financial year Budget and Operational Plan (projects and business for the next twelve months). Thanks to everyone who attended and spoke with us about what's important to you in this region.
- The Budget was passed on 29 June, and this included adoption of the 2023/24 component of the Special Rate Variation of 12.25%. This was a hard decision made by Council in this difficult economic climate, but the focus is to keep working for the community and undertaking maintenance of roads and the community's assets. Please reach out to our super friendly Council staff if you are having difficulty paying rates, as there are many options to make life easier and they can help.
- Ryrie St Extension/Bridge: while we are still held up by NSW government processes required to approve the use of a tiny parcel of railway land, work on the bridge has actually commenced! The company who will be constructing the bridge have been making all of the required components off site, so once we have the go-ahead it will go together like a giant Ikea project, I imagine!
- Whilst Council approved a new subdivision on Karinya Plains Road at the last Council meeting, I advocated hard and fiercely for additional attention to be given to Micalago Road regarding ongoing maintenance. With the introduction of the SRV and better analysis of usage data, I am working to make sure Micalago Road is regularly maintained.
- I represented the community at our latest Citizenship Ceremony in Cooma, held at the Multicultural Centre. I love welcoming our newest Aussies to the Snowy Monaro, and thanking them for choosing us!



***R: At the Citizenship Ceremony at the Cooma Multicultural Centre: Councillor Lynda Summers, Steve Whan MP, new Aussie Craig, Councillor Tanya Higgins.***

- I also Chair the Monaro Region Interagency Committee, which links all the Community Support Services in this region up, working together with Council and local industries like Snowy Hydro. There is an exciting project being undertaken by Monaro Family Support Services to work with all the agencies on the ground to improve disaster preparedness, response and recovery.



*R: Rotary Club Changeover Dinner, 28 June: Councillor Tanya Higgins, incoming President Cooma Rotary, Glenys McMadden, and Kristy McBain MP.*

If you would like more information, please visit my Facebook page (*Tanya Higgins – SMRC Labor Councillor*), email ([tanya.higgins@snowymonaro.nsw.gov.au](mailto:tanya.higgins@snowymonaro.nsw.gov.au)) or call (0420 970 544).

## JENNY'S REPAIRS & ALTERATIONS SERVICE



**\*\* very reasonable rates \*\***



Anything from sewing on buttons, altering hems, resizing, repurposing, to adjusting a formal garment. Also mending, patching or altering such household items as curtains, bedding linen, cushion covers, etc.

You may not need to throw out that favourite piece you love to wear, or maybe there's something you've just bought that doesn't really fit.

*Save yourself \$\$ by keeping items useful for longer and help to minimise waste*

Contact Jenny: Ph. 0400 484 485 Email: [jenny258@bigpond.com](mailto:jenny258@bigpond.com)



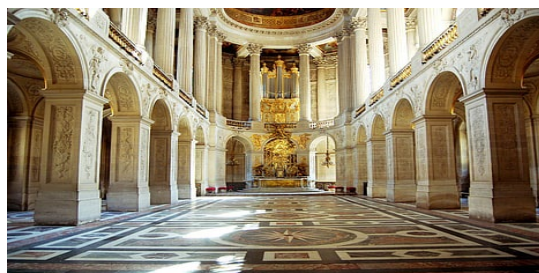
**Need a painter?**

Call Ardeshir on 0427339761.

Internal and external painting.

Excellent work and reasonable prices.

*[Creative Commons image]*





## Connecting Rural Families

30/15 Unlimited

**\$80** per month

**New!!**

Up to 50Mbps

**\$ 99** per month

**New!!**

Up to 100Mbps

**\$129** per month



Locally Based Helpdesk



Rural Internet Solutions

[www.yless4u.com.au](http://www.yless4u.com.au)

(02) 62303699

**Internet Packages to suit all needs!**

Plans starting from

**\$ 35** per month



## ~ Michelago Magpie Calendar ~

Please send quick updates of what's coming up, what's on and any corrections to [newsletter@michelagoregion.org.au](mailto:newsletter@michelagoregion.org.au) If the *Magpie* knows about it, it will be here.

If your friends want to be on the mailing list for the *Magpie* and its calendar, send names and emails to the above address.

Previous issues of *The Magpie* are on [www.michelagoregion.org.au](http://www.michelagoregion.org.au)

**Regular (Venues, contacts and times can change; information is here as received.)**

- **Choir** is in recess until September. Start date not yet available.
- **Fire Brigade** training first Sunday of the month, 9am–12noon. Contact details: MRCA notice board at the Michelago General Store.
- **Hall Committee** general meeting. Hall. Monthly 3<sup>rd</sup> Wed 6pm.
- **Hall bookings:** [memorial.hall@michelagoregion.org.au](mailto:memorial.hall@michelagoregion.org.au) or phone new number 0493 638 878 (hire rates will increase soon; for current rates, see *Magpie11*).
- **HIIT** (high intensity interval training) exercise class with Peter (0417 427 494). Hall. Sat 8am. \$10. 'Works for all ages.'
- **Library.** Mobile library 9.45—11.30, Mondays, outside the school. 3, 17, 31 July. See below. (See *Magpie 13* for complete library calendar. Schedule is also on the Shop Noticeboard).
- **MRCA** general meeting (open). Railway station. Monthly 2<sup>nd</sup> Wed 6pm.
- **Pony Club.** Monthly 2<sup>nd</sup> Sunday. Enquiries: Rhys (0401 778 004) or Alisha (0422 623 304) or email [michelagoponyclub.secretary@gmail.com](mailto:michelagoponyclub.secretary@gmail.com) Also see <https://ponyclubaustralia.com.au/>
- **Pre-School.** Hall. Teacher: Debbie is on leave. A new teacher hasn't been appointed yet. It has been weekly, Mondays 6am–6pm. *Magpie* awaits information about resumption.
- **Seed Savers.** See below for July date. To check dates and locations or if you have other questions, please SMS or email Belinda: 0411 043 027 or [hello@michelagoyoga.com.au](mailto:hello@michelagoyoga.com.au)
- **Senior Lunch Group.** 1<sup>st</sup> Monday of the month, 1pm, the Shop. More info in *Magpie10*.
- **St Patrick's** Catholic Church. Mass monthly, usu. 2<sup>nd</sup> Sat, 5.30pm. Updates on Facebook's Michelago Noticeboard.
- **St Thomas's** Anglican Church. Holy Communion. Monthly, 3<sup>rd</sup> Sunday 11am.
- **Trail Riders:** usu. monthly, 1<sup>st</sup> Sat. Check details on Tinderry tab of Australian Trail Horse Riders Association (ATHRA). *Magpie 4* has a feature write-up. President Don Munns 0407 235 407. Membership – Secretary Heidi Dreyer 0434 197 122.
- **Yoga:** classes are in recess until the end of July.

**One-offs (that we know about) (Venues and times can change; information is here as received.)**

### July

- **Sew-good with Jenny.** Call Jenny to book for classes 0400 484 485, [jenny258@bigpond.com](mailto:jenny258@bigpond.com) (Also see her new ad p12 for **Repairs & Alterations Service.**)
- **Women's Art Workshop in NAIDOC Week.** 7 July, 11—2pm. Railway Station. Bookings & Enquiries: Pud, 0409 220842 or [annelouisepollard@gmail.com](mailto:annelouisepollard@gmail.com)
- **Poets.** 9 July, 3pm, railway station. Enquiries: Pud on 0409 220 842.
- **Mobile Library.** 3, 17, 31. Outside the school 9.45—11.30am. Full schedule in *Magpie14*.

### August

- **Landcare presentation.** Saturday 5. Michelago Hall. Topic & times to come. More details p6.
- **Mobile library.** Mondays 14 & 28. Outside the school 9.45—11.30am.
- **Seed Savers.** Sunday 6 August. 2—4pm. 6141 Monaro Hwy. Seed planting & propagating. Bring seeds, cuttings. Potting mix, rooting hormone, pots supplied. Donations, please. SMS Belinda for more info 0411 043 027.

